

# AMBASSADOR 1972



 American  
Motors



## Clearly, American Motors' finest

In all the world, Ambassador is one of the few fine motor cars to offer such an extensive catalog of standard equipment. Air conditioning, "Torque-Command" automatic transmission, V-8 engine and now power brakes. There are two Ambassador lines and six models in all. Ambassador SST 2-door Hardtop, 4-door Sedan and 4-door Wagon — Ambassador Brougham 2-door Hardtop, 4-door Sedan and 4-door Wagon. Ambassador looks like a luxury car and behaves like one. Wheelbase is a long, smooth-riding 122". Seats are coil spring cushioned and coil spring suspension on all four wheels. Big in power, Ambassador performs almost effortlessly with its standard 304 CID V-8. A 360-CID V-8 (two or four barrel carburetor) and a 401 CID V-8 are optional. Individually adjustable "infinitely-variable" front reclining seats are one of the many optional features that mark Ambassador as one of the world's outstanding automobiles.



*SST 2-door hardtop in Hunter Green, metallic, with white vinyl top.*





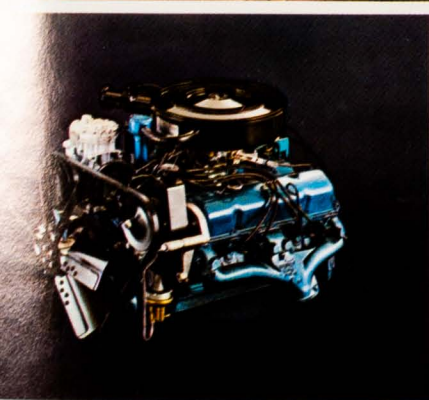




Left: Standard Brougham interior. Shown in black fabric. Other colors: blue, green and tan. Optional perforated vinyl available.



Left: SST instrument panel. Bright but not glaring. Readable but not garish.



Far left: 304 CID V-8 engine, standard on all Ambassador models.

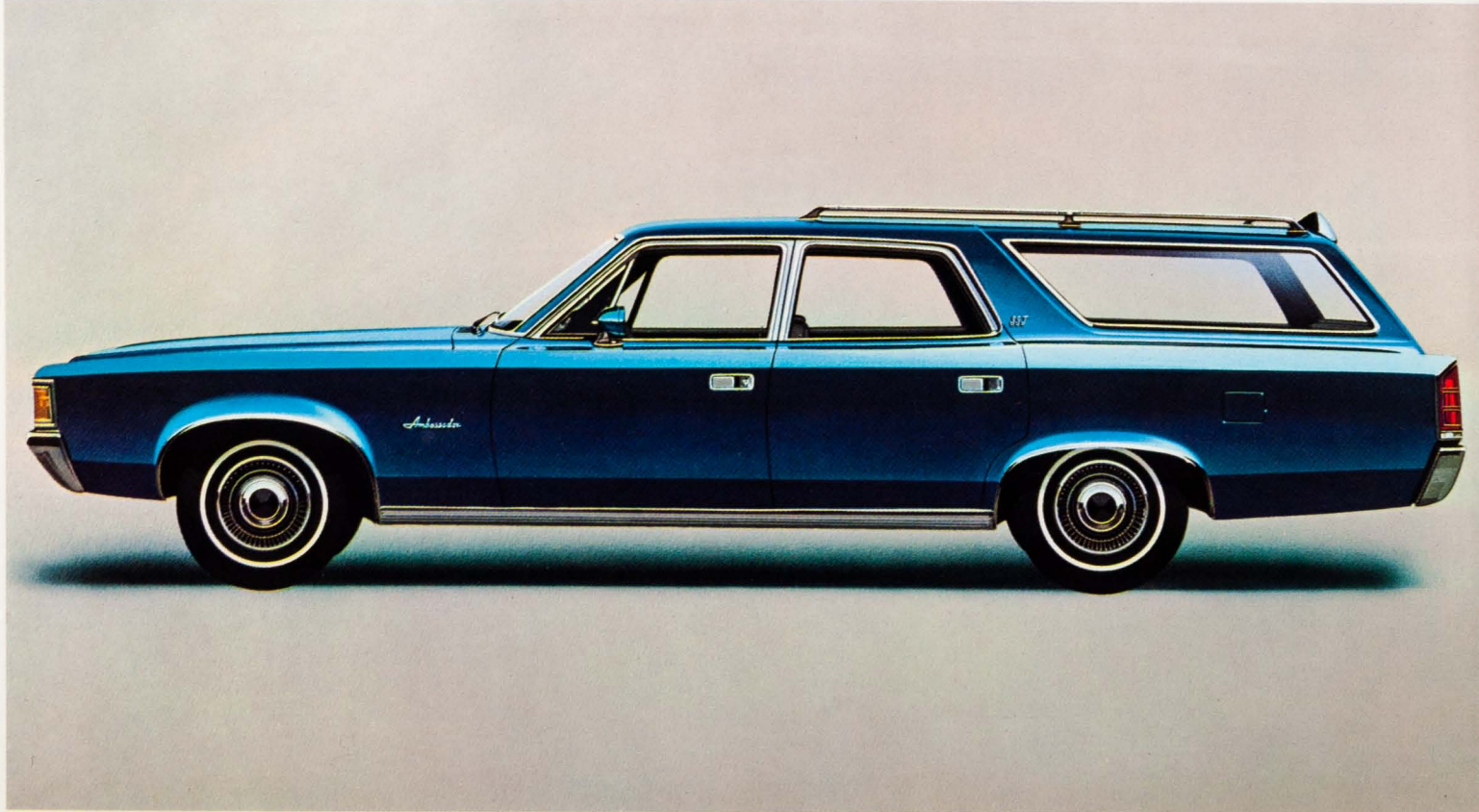


Left: Access to over 90 cu. ft. of cargo area is through the Dual Swing tailgate.





*Brougham 2-door hardtop in Cordova Brown, metallic, with black vinyl top.*



*Ambassador SST Wagon in Admiral Blue, metallic.*

# Specifications

## Models: Ambassador, SST and Brougham

- 4-Door Sedan: Ambassador SST and Brougham
- Station Wagon: Ambassador SST and Brougham
- Hardtop: Ambassador SST and Brougham

## Dimensions

- Wheelbase (in inches) 122.0
- Sedan & Hardtop length (in inches) 210.78
- Wagon length (in inches) 209.73
- Width (in inches) 77.2
- Front tread (in inches) 59.94
- Rear tread (in inches) 60.0
- Trunk space (in cubic feet) 18.2
- Cargo-space (in cubic feet incl. underfloor storage) for 2-seat Wagons 99.1, for 3-seat Wagons 91.1
- Fuel tank capacity (in gallons) 19.5 (20.0 3-seat wagon)

## Exterior & Interior

- All welded single unit construction (Advanced Unit Construction)
- Deep-Dip rust proofing
- Lustre-Gard acrylic enamel—triple coats
- Molded Fiberglass ceiling
- Body sound insulation on floor
- Coil-spring seat construction except formed wire on optional bucket seats
- Foam cushion front and rear seat pads
- Dual swing tailgate for wagons
- Tailgate air deflector (standard on Brougham)
- Front and rear safety-styled armrests
- Glove box lock
- Interior lights
- Bumper guards front and rear (Rear NA on wagons)
- Roof top travel rack (Wagons only)
- Hidden compartment storage space w/lock (Wagons only)
- Custom steering wheel
- Color-keyed wood-grain side panels (standard on Brougham wagon, NA on SST)
- Inside hood lock release
- Double body side paint stripes, Brougham
- Full wheel covers, Brougham
- Hood insulation, Brougham
- Bench seats, non-reclining (standard)

## Mechanical

- Torque-Command automatic column shift transmission
- Coil springs at all four wheels
- Twin ball-joint front suspension system
- Rear suspension of 4-link trailing arm design
- Brake diameter, V-8 (in inches) 10
- Brake lining area, V-8 (in square inches) 167 Sedans & Hardtops, 196 Wagons
- Anti-smog exhaust emission control
- Anti-smog fuel-tank vapor emission control system
- Front sway bar—all models
- Suspended operating pedals
- Step-on parking brake
- Power brakes

## Heating & Cooling

- All-season air conditioning with heavy duty cooling

## Safe Command Highlights

- Back-up lights & 4-way hazard warning signals
- High intensity headlights with "Guard-Glo" feature
- Anti-theft lockable steering column
- Rear view mirror left side, exterior
- 12" day-nite mirror, inside
- Electric windshield washers
- 2-speed electric windshield wipers, non-glare finish
- Side-of-car markers, illuminated with headlights
- Double safety self-adjusting brake system
- Seat belts for all seating positions
- Two front shoulder belts
- Two front seat head restraints
- High-strength door locks & safety shaped interior door handles
- Padded instrument panel, visors and front seat back
- Energy-absorbing steering column
- Brake system warning light
- High strength laminated windshield
- Flush contoured outside door handles
- Deep-dish energy absorbing steering wheel

# Options

## Paint & Upholstery

- ☐ Two-tone paint
- ☐ Vinyl covered roof (5 colors Sedan & Hardtop)
- ☐ All vinyl seat upholstery (standard on Wagons)
- ☐ Individually adjustable reclining seats
- ☐ Bucket seats non-reclining with center armrest & center cushion (Brougham Hardtop only)

## Performance Items

- ☐ Twin-grip differential
- ☐ Dual exhaust system—for 360 CID, 4 bbl. engine (standard on 401 CID)

## Power Assists

- ☐ Power steering (recommended with air conditioning)
- ☐ Power front disc brakes
- ☐ Power lift tailgate window (standard on 3-seat Wagon)
- ☐ Power lift windows, side
- ☐ Power lift windows, side and tailgate

## Audio

- ☐ AM push button radio
- ☐ AM/FM push button multi-plex stereo radio: 2 front door & 2 rear speakers (Sedan & Hardtop) 2 front door speakers (Wagon)
- ☐ Rear speaker w/AM radio only (Sedans & Hardtops)

## Convenience

- ☐ Stowage/litter container
- ☐ Command-Air ventilation system, instead of air conditioning
- ☐ Tinted glass, all windows
- ☐ Third seat, wagon: 2 seat belts & power lift tailgate window

- ☐ Rear window defogger: 55 amp. alternator & tinted glass (NA on Wagon)
- ☐ Tailgate air deflector, standard on Brougham, Wagon
- ☐ Cruise-Command automatic speed control system
- ☐ Adjust-O-Tilt steering wheel
- ☐ Visibility group: remote control left outside mirror, visor vanity mirror, deluxe 3-speed electric wipers, electric clock & cargo net (Wagon)
- ☐ Deluxe 3-speed electric wipers
- ☐ Light group: trunk or cargo light, two courtesy lights, glove box light, ash tray light, parking brake warning light, headlights-on warning buzzer and rear door switches, (standard on Brougham)
- ☐ Headlights-off delay system

## Protection Items

- ☐ Insulation group: undercoating and hood insulation SST only
- ☐ Undercoating, Brougham only
- ☐ Clear molding—side (NA wagon w/wood grain)
- ☐ Clear vinyl floor protection mats

## Appearance

- ☐ Sports steering wheel 15" 3-spokes
- ☐ Wheel covers (4) (Std. on Brougham)
- ☐ Custom wheel covers (4)
- ☐ Turbo disc wheel covers (4)
- ☐ Spoke style wheels (4)

## Heavy Duty Equipment

- ☐ Heavy duty engine cooling system: heavy duty radiator, power flex fan and shroud (standard with air conditioning)
- ☐ Heavy duty 70 amp. battery
- ☐ 50 or 60 amp. tropical batteries
- ☐ Handling package: heavy duty springs & shocks plus rear sway bar
- ☐ Rear sway bar
- ☐ Engine block heater
- ☐ Adjustable air-shock rear suspension

## Miscellaneous

- ☐ Nitrox/TCS system—Nitrox and transmission controlled spark system
- ☐ Touch-up paint
- ☐ Export headlamps amber or clear lens
- ☐ Metric speedometer
- ☐ Locking gas cap
- ☐ Export tool kit
- ☐ Electric clock, separate from visibility group
- ☐ Manual drum brakes, instead of standard power brakes

Equipment and power features, illustrated or described on this brochure, are optional at extra cost unless otherwise specified. Certain equipment items may not be available for all models. American Motors, whose policy is one of continuous improvement, reserves the right to discontinue or change specifications, models, equipment or prices at any time without incurring obligation. This also applies to local assembly or manufacture areas where local content requirements may affect standard and/or optional specifications.



Engines	Carbs.	Net HP @ RPM	Net Torque @ RPM	Compression Ratio	Bore & Stroke	Ambassador SST Brougham		Transmissions	Axle Ratios
304 Cu. In. V-8	2-Barrel	150 @ 4200	245 @ 2500	8.4:1 Reg.	3.75" x 3.44"	S	S	Torque Command Automatic on Column (Standard)	2.87:1 (3.15:1)
360 Cu. In. V-8	2-Barrel	175 @ 4000	285 @ 2400	8.5:1 Reg.	4.08" x 3.44"	0	0	Torque Command Automatic on Column	2.87:1 (3.15:1)
360 Cu. In. V-8	4-Barrel	195 @ 4400 (1)	295 @ 2900 (2)	8.5:1 Reg.	4.08" x 3.44"	0	0	Torque Command Automatic on Column	2.87:1 (3.15:1)
401 Cu. In. V-8	4-Barrel	255 @ 4600	345 @ 3300	8.5:1 Reg.	4.165" x 3.68"	0	0	Torque Command Automatic on Column	2.87:1 (3.15:1)

(1) 220 @ 4400 w/dual exhaust.  
(2) 315 @ 3100 w/dual exhaust.

S—Standard 0—Optional