



1981 DODGE  
**DIPLOMAT**

**AFFORDABLE ELEGANCE !**





*Diplomat Salon Two-Door Specialty Hardtop*

## **Diplomat . . . more than basic transportation whatever your model preference**

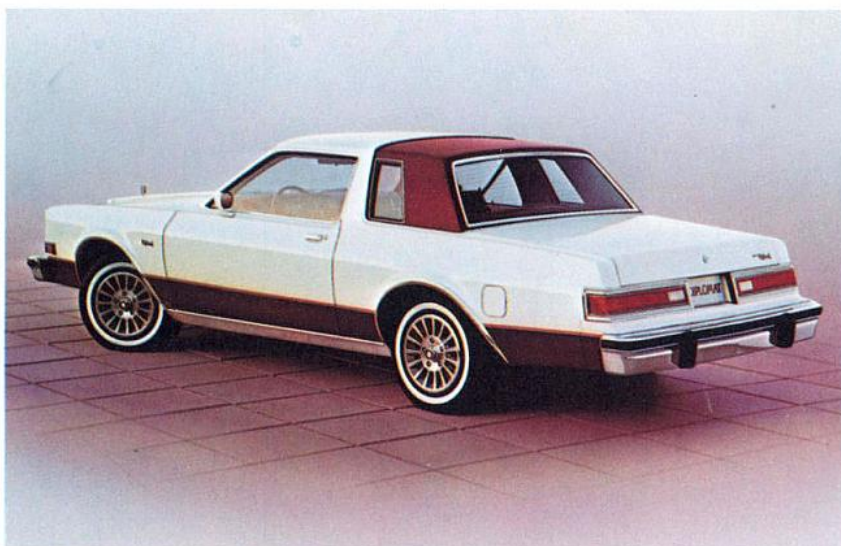
Every Diplomat or Diplomat Salon model goes beyond the basics. To suit your preferences, the "Diplomat" series is available in three body styles with six distinct models compatible to your individuality.

Tailoring Diplomat to your personal tastes is very easy, due to the many interior selections of colour, fabric and seating arrangements offered.

Unlike some of Diplomat's competitors, base vehicle prices *do include* power steering, radial tires, power front disc brakes, Torqueflite automatic transmission, and more.



*Optional Cloth & Vinyl Bucket Seat*



*Diplomat Two-Door Sport Coupe*

Everything you could ask for regarding instrumentation and their accessibility is on the job guarding you . . .  
. . . and Diplomat's performance.

Diplomat for '81 . . . proves luxury is more than skin deep. Try it "on the road".







*Diplomat Four-Door Sedan*

**Everything that's good in Diplomat . . . plus two more doors.** Not everybody's needs can be satisfied with two doors. That's why Diplomat and Diplomat Salon feature four-door-sedans. There are people who need four-door convenience . . . and six-passenger comfort. If ride and handling concern you, rest assured Diplomat delivers great performance. That's due to standard power-assist equipment and a suspension system engineered to tame rough roads and curves.



*Diplomat Salon Four-Door Sedan (right)*



*Optional All-Vinyl Bench Seat*

**Plenty of choice . . . and room.** Diplomat allows you to personally design your interior. There are a rainbow of colours and materials at your command including seating arrangements made "just for you" and your family. There's six-passenger comfort. Every Diplomat is insulated and "noise-isolated" so that you can converse in your normal tones.

Travelling with a family requires large trunk space. Diplomat's four-door sedan trunk provides 442 dm<sup>3</sup> (15.6 cu. ft.). It's nice to know that you can take more necessities along when you visit or vacation.







*Diplomat Salon*

## **DIPLOMAT STATION WAGONS . . . WHEN YOU NEED MORE SPACE COMBINED WITH ELEGANCE.**

Some station wagons give you space. Others provide the luxury touches. Diplomat gives you space and luxury . . . and more. You'll find Diplomat wagons have a dual personality. They're perfectly suited for work . . . and play.

That woodgrained textured look, combined with a tasteful use of exterior ornamentation, sets the Salon series apart from the ordinary. There are many standard equipment features which will be a pleasant surprise. One of the main reasons for buying a station wagon is space. You'll find cargo space aplenty in Diplomat. There's a maximum of 2077 dm<sup>3</sup> (73.3 cu. ft.). It's easy to load. The top-hinged liftgate and low sill height makes filling the rear cargo area easy for all drivers.

Wagon interior selections feature, as standard, an all-vinyl bench seat. Colours are coordinated with your exterior paint selection. An all-cloth 60/40 split bench seat with centre armrest and passenger side recliner is optional on Salon models.

The time to "think" wagon is before you buy. If you need six-passenger comfort . . . plenty of cargo space . . . engineering excellence in a beautiful package . . . buy or lease a Diplomat wagon!



*Optional 60/40 All-Cloth Bench Seat*



*Diplomat*



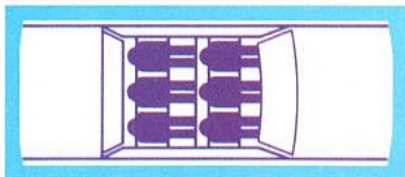


## Chrysler engineering puts added value into every Diplomat



**Slant Six 3.7-litre (225 cu. in.) 2-barrel engine**... designed to combine modern day power needs with fuel efficiency.

You get this combination with every Dodge Diplomat. An added dividend is the durability engineered into this proven performer. Cast-iron crankshaft, steel-backed aluminum-alloy main bearings, deep-skirt engine block, hydraulic valve lifters, electronic ignition, aluminized steel exhaust and tailpipes, single exhaust system with catalytic converter, long-branch intake manifold with curved pipes, and induction-hardened exhaust-valve seats attest to this engine's strength and long life.



**Six-Adult roominess**... and comfort... are certainly noticeable advantages of your 1981 Diplomat. Chrysler "Unibody" construction is the basic reason. This ingenious design provides more interior room for the passengers.

**Radial Ply Tires (Glass Belted)**... a quality feature... standard with Dodge Diplomat.

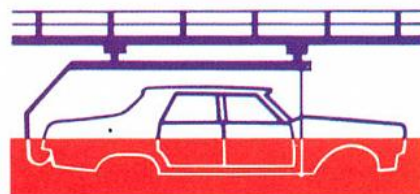
Not all cars are equipped with radial tires as a standard feature. There are advantages to owning a car with radial tires. Advantages such as better road traction, and cornering. All of these contribute to adding a greater margin of safety. Of course, radial tires wear longer, meaning greater economy and reliability. You'll feel more comfortable and obtain better fuel economy, too.



**Electronic ignition** is an outstanding value-feature of the standard 6-cylinder engine. This automotive feature, pioneered by Chrysler, provides precise engine performance and gives you excellent fuel economy, reliable starting & smooth acceleration. It also helps to control engine emissions even before they leave the engine.

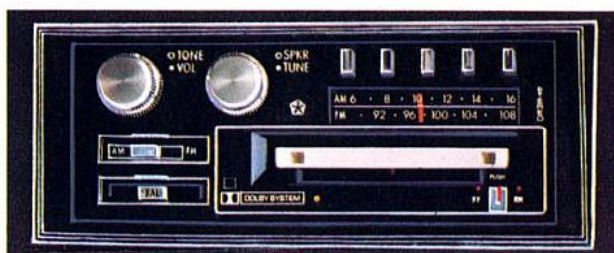


**Generous trunk capacity** makes your 1981 Diplomat a welcome companion for travel. There's plenty of usable space for whatever you must carry in both the Diplomat two-door and four-door models.



**Corrosion Protection.** Canadian winters and driving conditions make Chrysler Canada's corrosion protection a highly desirable standard feature. Every Diplomat is subjected to the "seven-dip-and-spray" treatment, extra zinc-rich primers to selected corrosion-prone areas, and use of double or single-sided galvanized steel in those areas where corrosion is most likely to occur and diminish the car's beauty or durability.





B



C

A

## Dodge Diplomat options are a passport to pride

**A. Illuminated Entry System.** Step up to your Diplomat, lift the door handle and the interior lights go on before you unlock or open the door. An indispensable nighttime safety feature.

**C. Air Conditioning** is, of all the options available, the one you'll least want to do without. Once you experience its comfort and efficiency you'll never be without it again.

**F. Wheel Covers** add sports car spirit to your Diplomat. Constructed of exceptionally durable materials to keep that new-car look through many miles of driving.

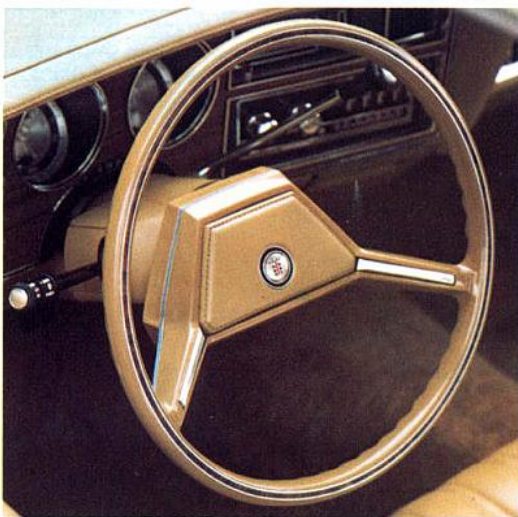
**B. AM/FM/MX Stereo with Cassette Player and Dolby\* feature** lets you play your favourite tapes, listen to your favourite broadcast without the annoyance of excessive noise. It's the closest thing to home entertainment ever put in a car!

\*Trademark, Dolby Laboratories

**D. Luxury Steering Wheel.** Enhances the good looks of your Diplomat.

**E. Speed Control** can be incorporated into the standard multifunction column-mounted lever to give you exceptional ease and extra fuel economy in long-trip driving.

**G. Liftgate Wiper/Washer** sweeps the rear window clean when it's raining or snowing; lets you wash it when it's dry and dirty.



D



E



F



F



G



## Dodge Diplomat Standard Equipment Features

- ALTERNATOR—60 amp., 65 amp. with optional electrically heated rear window defroster
- ASH RECEIVERS—Instrument panel and rear armrests
- BATTERY—430 amp., Maintenance Free with built-in test indicator
- \*BODY—Unibody construction combines body and frame into one solid, strong unit
- \*BRAKES—Dual braking system with separate brake-fluid reservoir in master cylinder. Front disc and rear drum, power
- BUMPER GUARDS—Front and rear (Station wagons) Front only (all other models)
- \*BUMPER RUB STRIPS—Front and rear
- \*BUMPERS—Hydraulic energy absorbing units restrict damage to bumpers and filler panels at impact speeds up to 8 km/h (5 mph), front and rear
- CATALYTIC EXHAUST SYSTEM
- CIGAR LIGHTER
- COAT HOOKS—Left and right side, made of soft plastic
- COOLANT RESERVE SYSTEM
- CORROSION PROTECTION—Seven stage anti-corrosion process. Extensive use of galvanized steel. Front wheelhouse liners of high impact plastic
- \*DOORS—Safety action recessed door handles, keyless locking system. Interlocking non-override door locks (except driver's door)
- EMISSION CONTROLS—Closed crankcase ventilation. Air preheat. Evaporative control and charcoal canister. Automatic vacuum spark advance, exhaust gas recirculation and electric-assist choke
- FLOOR CARPETS—Colour-keyed, front and rear
- HEADLINING—Reinforced headliner of perforated hardboard covered with foam-backed knit nylon
- HEATER/DEFROSTERS—With Bi-level ventilation
- HOOD RELEASE—Conveniently located inside, below the instrument panel
- HOOD SILENCER PAD
- HORNS—Single (Diplomat models), Dual (Diplomat Salon models)
- IGNITION—Electronic Ignition System eliminates breaker points and condenser. Reduces tune-ups and emissions. Provides easier starting
- \*IMPACT PROTECTION—Protection beams in door. Improved rear impact and roll-over integrity fuel systems.
- \*INSTRUMENT PANEL AND CONTROLS—Sherwood woodtone instrument panel includes a padded "cockpit style cluster" design with "key-left-in-ignition" warning buzzer, integrated brake fluid pressure loss-parking brake warning indicator and locking glove box.

- \*LIGHTS—Dual rectangular headlights, taillights, stoplights and backup lights, side marker lights and reflectors, dome lights with courtesy switches, turn signal lights with lane change feature, 4-way emergency flasher instrument panel and ashtray light, liftgate ajar warning (Station Wagons)
- \*LOCKS—Anti-theft ignition and break-in resistant trunk lock
- \*MIRRORS—Outside, remote control, left, in chrome (except Diplomat 2-Door "Sport Coupe"). Inside, balljoint-mounted, non-prismatic (Diplomat models). Inside, balljoint-mounted, prismatic day/night (Diplomat Salon models)
- MULTIFUNCTION COLUMN SWITCH—Turn signal control lever with integral headlight dimmer control and windshield wiper control
- PAINT—13 colours in durable Acrylustr finish
- \*SEAT BELTS—Colour-keyed with tension reliever and auto release features. Combined lap and shoulder Unibelt system for driver and front outboard passenger. Lap belts for all remaining passengers
- \*SEATS—Cloth-and-vinyl bench with driver and passenger head restraints (Diplomat models) Bench with centre armrest on Diplomat Salon models. Wagon interior trim in all-vinyl. Foam cushion pads of fire retardant materials. Energy absorbing seat backs, including (Inertia latch on Two-Door models)
- SPARE TIRE—Hi-pressure compact
- SPEEDOMETER—Dual calibrated (km/h and mph) with metric predominant. Distance recorder (odometer) reads in kilometres
- \*STEERING—Power with impact absorbing column and wheel
- STEERING WHEEL—2-spoke wheel with horn switches in spokes and centre pad
- STOWAGE BINS—Cargo area with lockable covers (Station Wagons)
- \*SUN VISORS—Left and right, padded swivel type
- SUSPENSION—Big car ride. Front anti-sway bar. Torsion bars, front. Leaf springs, rear. Oriflow shock absorbers. Front suspension and the front engine mounts are attached to the structural crossmember which is isolated from the unitized body by four rubber mounts.
- TIRES—White sidewall glass-belted radials
- TRANSMISSION—3-speed "Wide Ratio" Torqueflite Automatic
- TRIP ODOMETER—Calibrated in kilometres
- \*WHEELS—15" Safety-Rim
- WHEEL COVERS—Sport Styled (2-Door Sport Coupe models), Deluxe 15" (all other models)
- \*WINDSHIELD—Laminated glass prevents shattering
- \*WINDSHIELD WIPERS/WASHERS—Electric 2-speed with overlapping wipe pattern
- \*Safety Features

## Selected Optional Equipment

- AIR CONDITIONING—Manual or automatic temperature control
  - AIR DEFLECTOR—Station Wagon
  - AUTOMATIC SPEED CONTROL
  - AXLE—Rear with Sure-Grip Differential
  - BATTERY—500 amp. Long Life
  - CARGO SECURITY COVER
  - CLOCK—Electronic digital
  - CORNERING LIGHTS
  - DECK AND LID RELEASE—Inside
  - DEFROSTER—Electrically heated rear window
  - ENGINE BLOCK HEATER
  - FLOOR MATS—Colour-keyed
  - GAS CAP, LOCKING
  - GLASS—Tinted, all windows
  - HALOGEN HEADLAMPS
  - ILLUMINATED ENTRY SYSTEM
  - LUGGAGE ROOF RACK—(Station Wagons only)
  - MIRRORS—Outside, right, remote control, in chrome. Dual, remote control, in chrome or painted sports style. Illuminated sun visor left and right side.
  - PACKAGES—There are many special option packages available, some of which are: Air Conditioning Value Package, Protection Group Package, Light Package or the Two-Tone Paint Package. See your dealer for full details.
  - POWER ASSISTS—Antenna. Deck or liftgate release, locks, seats and windows.
  - RADIOS—AM, AM/FM, AM/FM/MX, AM/FM/MX with CB transceiver and fixed tri-band antenna, AM/FM/MX with electronic search tune feature, AM/FM/MX with 8-track tape player and AM/FM/MX tape cassette player with Dolby® noise reduction system. All radios equipped with the Traveller's Information Service (T.I.S.) feature for travel in the U.S. \*Trademark, Dolby Laboratories
  - ROOF, T-BAR—(Two-Door models) includes see through removable panels
  - STEERING WHEELS—Tilt column, luxury 2-spoke, leather-wrapped 2-spoke or 3-spoke "Sport" wheel
  - SUN ROOF—Power operated (Not available on Wagons)
  - SUSPENSION, HEAVY-DUTY—Includes torsion bars, rear springs and shock absorbers
  - UNDERCOATING
  - VINYL ROOF—Full style (Four-Door Sedans only) Landau (Two-Door models)
  - WHEEL COVERS—Luxury, premier or wire
  - WHEELS—Styled or forged aluminum road wheels
  - WINDSHIELD WIPERS—Deluxe with intermittent wipe
  - WIPER/WASHER—Liftgate (Wagons)
- Ask your dealer for the complete story on the many other Dodge Diplomat available options.

## Seat Availability

Model	Standard Seat	Material	Optional Seat	Material
Two-Door "Sport Coupe"	Bench	Cloth & Vinyl	Bench with folding centre armrest (b)	All Vinyl
Diplomat Four-Door Sedan	Bench	Cloth & Vinyl	Bench with folding centre armrest (b)	All Vinyl
Diplomat Station Wagon	Bench	All Vinyl	Bench with folding centre armrest (b)	All Vinyl
			60/40 split bench with folding centre armrest (a) (b)	All Cloth
Diplomat "Salon" Two- and Four-Door Models	Bench with folding centre armrest (b)	Cloth & Vinyl	60/40 split bench with folding centre armrest (a) (b)	All Cloth
			Bench with folding centre armrest (b)	All Vinyl
			Bucket Seats (Two-Door) (c)	Cloth & Vinyl
Diplomat "Salon" Station Wagon	Bench with folding centre armrest	All Vinyl	60/40 split bench with folding centre armrest (a)	All Cloth

(a) Includes passenger side recliner. (b) Includes driver's side inertia latch and passenger side easy-entry system, on two-door models.  
(c) Optional centre cushion and folding centre armrest available.



# DODGE DIPLOMAT BASIC SPECIFICATIONS

## Model Availability

	Two-Door Sport Coupe	Two-Door Specialty Hardtop	Four-Door Sedan	Four-Door Station Wagon
Diplomat	X		X	X
Diplomat Salon		X	X	X

## Exterior Dimensions

	Two-Door Specialty Hardtop and Sport Coupe		Four-Door Sedan		Four-Door Station Wagon	
	millimetres	inches	millimetres	inches	millimetres	inches
Wheelbase	2761	108.7	2863	112.7	2863	112.7
Overall Length (a)	5123	201.7	5225	205.7	5232	206.0
Overall Width	1834	72.2	1844	72.6	1844	72.6
Overall Height (b)	1331	52.4	1339	52.7	1341	52.8
Track—Front	1524	60.0	1524	60.0	1524	60.0
—Rear	1511	59.5	1511	59.5	1511	59.5
Curb Weight (c)—Kilograms	1496		1537*		1623*	
—Pounds		3298		3389*		3579*

\* Diplomat sedan and wagon.

(a) Includes bumper guards. (b) Based on five passenger load. (c) Two-door Sport Coupe—1489 kilograms (3282 pounds).

## Interior Dimensions

	Two-Door Specialty Hardtop and Sport Coupe		Four-Door Sedan		Four-Door Station Wagon	
	millimetres	inches	millimetres	inches	millimetres	inches
Effective Headroom—Front	955	37.6	998	39.3	996	39.2
—Rear	932	36.7	958	37.7	983	38.7
Effective Legroom—Front	1074	42.3	1079	42.5	1079	42.5
—Rear	848	33.4	930	36.6	930	36.6
Shoulder Room—Front	1422	56.0	1422	56.0	1422	56.0
—Rear	1448	57.0	1420	55.9	1420	55.9
Hip Room—Front	1445	56.9	1445	56.9	1445	56.9
—Rear	1333	52.5	1448	57.0	1448	57.0

## Luggage Compartment

	Two-Door Specialty Hardtop and Sport Coupe		Four-Door Sedan	
	millimetres	inches	millimetres	inches
Loading Height	724	28.5	724	28.5
*Usable Luggage Capacity—dm <sup>3</sup>	419		442	
—cu. ft.		14.8		15.6

## Station Wagon Cargo Compartment

	millimetres	inches
Height—Floor to roof at liftgate opening	693	27.3
Length—Second seat to end of open tailgate	1316	51.8
—Second seat to closed tailgate	1250	49.7
—Front seat to end of open tailgate	2136	84.1
—Front seat to closed tailgate	2068	81.5
Width—Floor opening	1120	44.1
—Between wheelhousing	1100	43.3
—At belt line	1212	47.7
Loading Height	780	30.7
Volume—dm <sup>3</sup>	2077	
—cu. ft.		73.3



BUY, RENT  
OR LEASE

All product illustrations and specifications are based on authorized information. Although descriptions are believed correct at publication approval, accuracy cannot be guaranteed. Some of the equipment shown on product illustrations is optional, at extra cost. Chrysler Canada Ltd. reserves the right to make changes from time to time, without notice or obligation, in prices, specifications, standard and optional equipment listed, colours and materials, and to change or discontinue models.

