

1994 Accord Sedan



Accord EX Sedan shown in Sage Green Metallic.



Accord LX Sedan shown in Nightshade Gray Pearl.



1994 Accord Sedan This Accord Sedan is unlike any Honda you've ever seen before. The body and interior are completely new. As are the engineering and technology. In terms of safety, there are airbags for both the driver and front passenger. And U.S. government side-impact standards set for 1997 have been achieved this year. Simply put, this is the best Accord ever. Quite an achievement, considering the track record established by previous generations of the Accord.

As you can see, the designers made good use of their time in the wind tunnel. The new Accord Sedan is stylish, yet

Evidently, Honda engineers and designers had their sights set well beyond 1994. aerodynamically efficient. From the

low hoodline to the high rear deck, all the design elements blend to form the muscular wedge shape. The cabin beneath the new look is spacious. And quiet, too, thanks in part to a stiffer body structure that's been reinforced to minimize engine and road noise.

Under the hood is an advanced 16-valve, fuel-injected engine. Two important goals for the new Accord were to increase power and fuel efficiency. With variable valve-timing technology in the EX VTEC engine, acceleration, horsepower and mileage ratings are improved.* Available is a new smooth-shifting automatic transmission. With the new Grade Logic Control System, the transmission can determine more efficient shift points based on driving conditions. A redesigned double wishbone suspension system provides agile handling and a comfortable ride. For increased stopping performance on the EX, a refined anti-lock braking system (ABS) was developed.

That said, which 1994 Accord Sedan is the right one for you? Of all the new Accords, the DX Sedan offers the best value. With the Accord LX, luxury is a standard feature. And the prestigious EX is bound to make the biggest impression of the trio. For a better overview of all the new Accord Sedans, we invite you to set your sights on the following page.

The new Accord meets

federal 1997 side-impact

standards 3 years early.



Accord DX Sedan includes: Driver's and Front Passenger's Airbags SRS, 2.2 Liter, 130-hp, 16-Valve Engine with PGM-FI, 5-Speed Manual or 4-Speed Automatic Transmission, 4-Wheel Double Wishbone Suspension, Front Stabilizer Bar, Variable-Assist Power Steering, Maintenance Interval Indicator, Center Console Armrest with Storage Compartment, P185/70 R14 87S All-Season Tires, Available Anti-Lock Braking System (ABS) with 4-Wheel Disc Brakes (available 1/94)

Body Colors:
Frost White,
Bordeaux Red,
Sage Green,
Nightshade
Gray

LX adds: Power Windows, Mirrors and Door Locks, Air Conditioning, Cruise Control, AM/FM High-Power Stereo Cassette, Beverage Holder, P185/70 R14 87S Michelin XGT4 All-Season Tires, Rear Seat Center Armrest

Body Colors:
Frost White,
Bordeaux Red,
Sage Green,
Nightshade
Gray,
Cashmere,
Malachite
Green

EX adds: 2.2 Liter, 145-hp, SOHC VTEC Engine with PGM-FI, 4-Wheel Disc Brakes, Anti-Lock Braking System (ABS), P195/60 R15 88H Michelin MXV4 XSE All-Season Tires, 15" Alloy Wheels, AM/FM High-Power Stereo Cassette with 6 Speakers, Driver's Seat with Adjustable Lumbar Support and Power Height Adjustment, Power Moonroof, Available Leather-Trimmed Seats and Door Panel Inserts and Leather-Wrapped Steering Wheel

Body Colors:
Frost White,
Bordeaux Red,
Cashmere,
Sage Green,
Granada Black,
Sherwood
Green

Accord LX Sedan shown in Cashmere Metallic.



Made in America In Ohio, you'll find towns with names like Anna, East Liberty and Marysville. And if you were to visit, you might meet some of the dedicated individuals who help build the Accord. Across the country, there are over 14,000 men and women who plan, manufacture and distribute new Honda products. For more than a decade, Honda has invested more than three billion dollars in the three Ohio auto and engine manufacturing plants. And the return? In the last year, three out of five Hondas and four out of five Accord Coupes, Sedans and Wagons sold in the United States were made here.



But it's more than producing quality cars. The teams who work in Engineering and **It still comes down to the people behind the car.** Research and Development play a major role in creating new cars such as the 1994 Accord. To meet the high expectations for Honda and its customers, designers and engineers put a lot of heart into testing new concepts, styles and prototypes.

The handiwork of our folks is now known the world over. For the past seven years, Honda has been exporting cars like the Accord to such countries as Japan, Germany and Brazil. Over 20 different international markets have come to admire Ohio-crafted Honda automobiles. Which is bound to please a few people back in Anna, East Liberty and Marysville.



1994 Accord Interior Honda thought about all the miles you'll be logging here.

The daily commute. Running errands. Perhaps a weekend trip every now and then. So please, make yourself at home in the driver's seat. You'll like how you feel. You'll like what you see. The visibility through the large glass areas is excep-

tional. Surrounding you and your front passenger is a newly styled instrument panel. The darker color of the upper half helps

The air conditioning system

in every 1994 Accord LX and EX features

a CFC-free refrigerant.

This just may become your favorite view of the new Accord.

reduce glare from the windshield. A lighter shade at the lower por-

tion visually opens up the passenger compartment. The white-on-black analog gauges are easy to read. Sensibly arranged controls and switches let you keep your focus on the road.

The new Accord Sedan boasts a number of accommodating features. An adjustable steering column for a touch more convenience. A rear seatback that folds down for trunk access. An armrest with a neat little way to hold a garage door opener. In the LX and EX models, the AM/FM High-Power stereo cassette unit can also function as a CD controller when you opt for the accessory CD player or the trunk-mounted CD changer. Also available as an accessory is the exclusive in-dash, hands-free cellular phone. We invite you to hop in the Accord Sedan and enjoy the ride.



In the LX and EX, the beverage holder is within your reach.



Not only is a driver's airbag standard, but there is one for the front passenger as well.



Open up the Accord EX Sedan to the sun, moon and stars with the power moonroof.

Accord EX Sedan instrument panel shown with accessory CD changer, cellular phone and floor mats.





Accord LX Sedan interior shown with accessory CD changer, cellular phone and floor mats.



1994 Accord Interior Ergonomics It's more than how you fit in the Accord. It's how the Accord fits with you. To start with, the designers studied how the seating could be even more comfortable and supportive. For example, the front seats are

High-tech composite sound-damping materials in the cabin help absorb road noise.

Welcome to the latest chapter in textbook ergonomics. roomy cabin. The generous amounts of headroom and shoulder room provide a relaxing environment. In the rear seat, adults are treated, well, like adults. The front seats are curved to create more knee room for those in the rear. More than just spacious, it's also quiet here. By minimizing engine noise, along with using a more rigid body and sound-damping materials, road noise is reduced.

As you would expect in an Accord, no creature comfort was overlooked. Power windows, door locks and mirrors are standard in the LX and EX. The cloth upholstery and carpeting selected are of the highest quality. But if you prefer, the Accord EX interior is available in rich, soft leather.

All in all, the engineers wanted your hours inside the new Accord to be time well spent.



Operate the cruise control from the steering wheel of the LX and EX.



Power window controls in the LX and EX are conveniently placed.



The driver's seat in the EX adjusts around you in six different ways.

Accord EX Sedan shown with available leather interior.



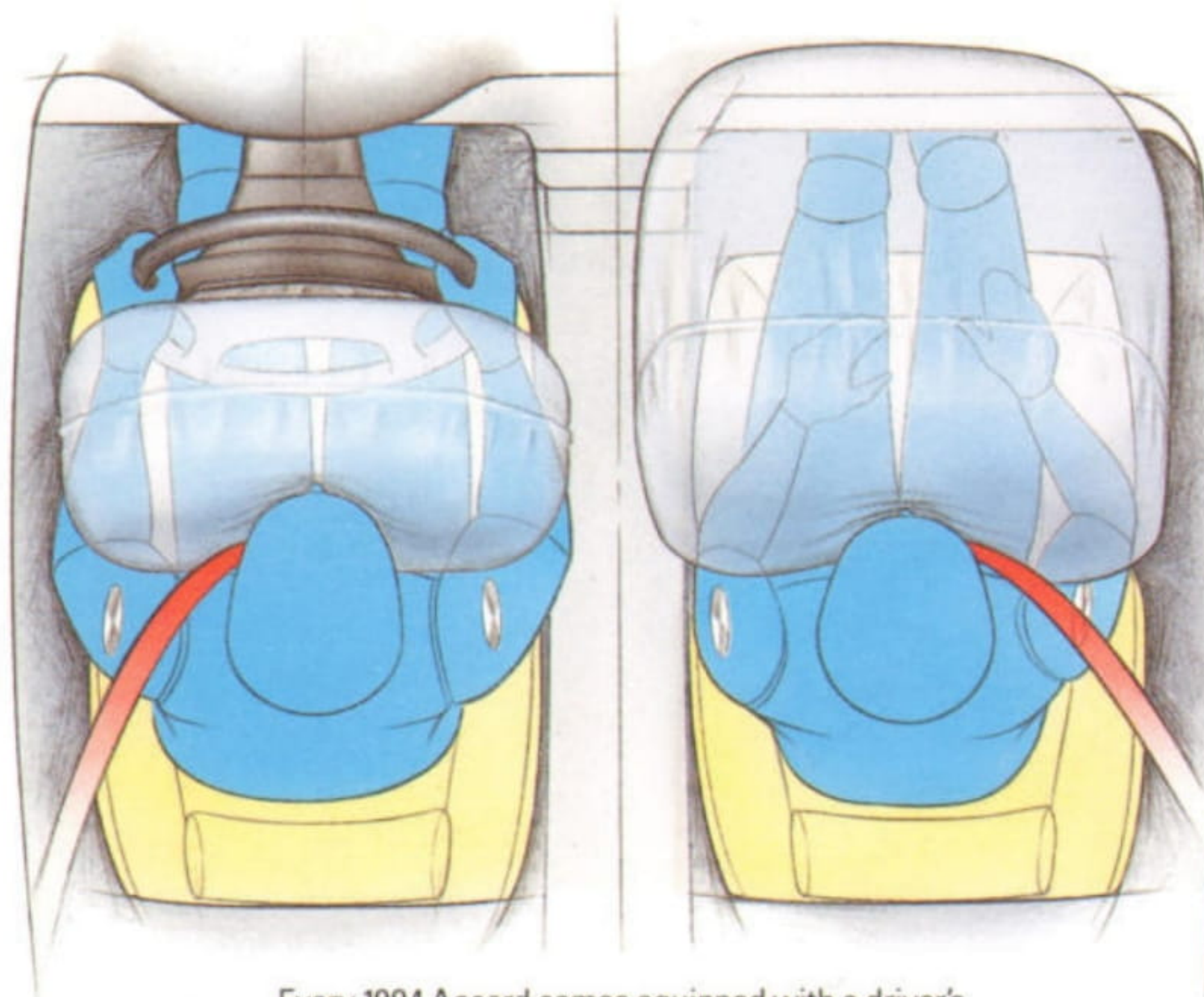


1994 Accord Safety From the crush zones and reinforced passenger compartment engineered into the very core of the car, to its dual airbags, the Honda commitment to automotive safety is evident everywhere in the new Accord.

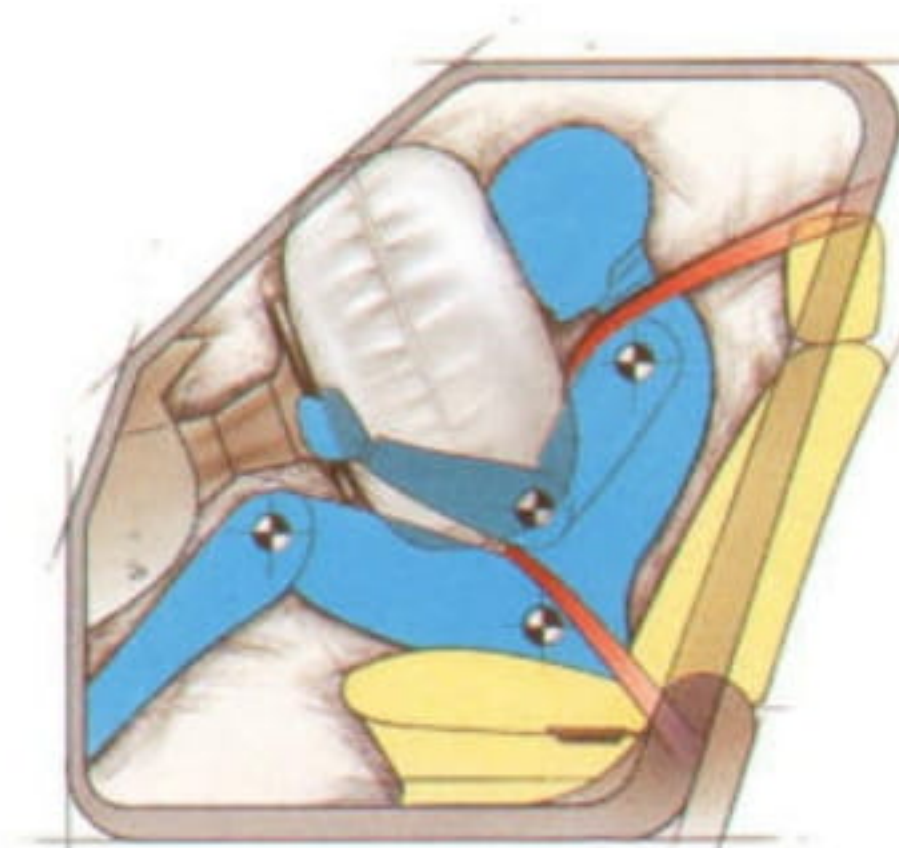
Dual Airbags SRS Sit in the driver's seat of the Accord and one of the first things you'll notice is the SRS module in the steering wheel. There's also one directly ahead of the front passenger's seat. Folded like a parachute into each module is an airbag made of a strong lightweight nylon material. When G-sensors located in the footwells and center console detect the rapid

Honda engineers meet the issue of safety head on. deceleration that accompanies a severe frontal impact, they act as switches, sending an electric current to an inflator in the airbag module. The airbags deploy in a fraction of a second, helping to protect the head and upper torso from injury. The bags quickly deflate after deployment.

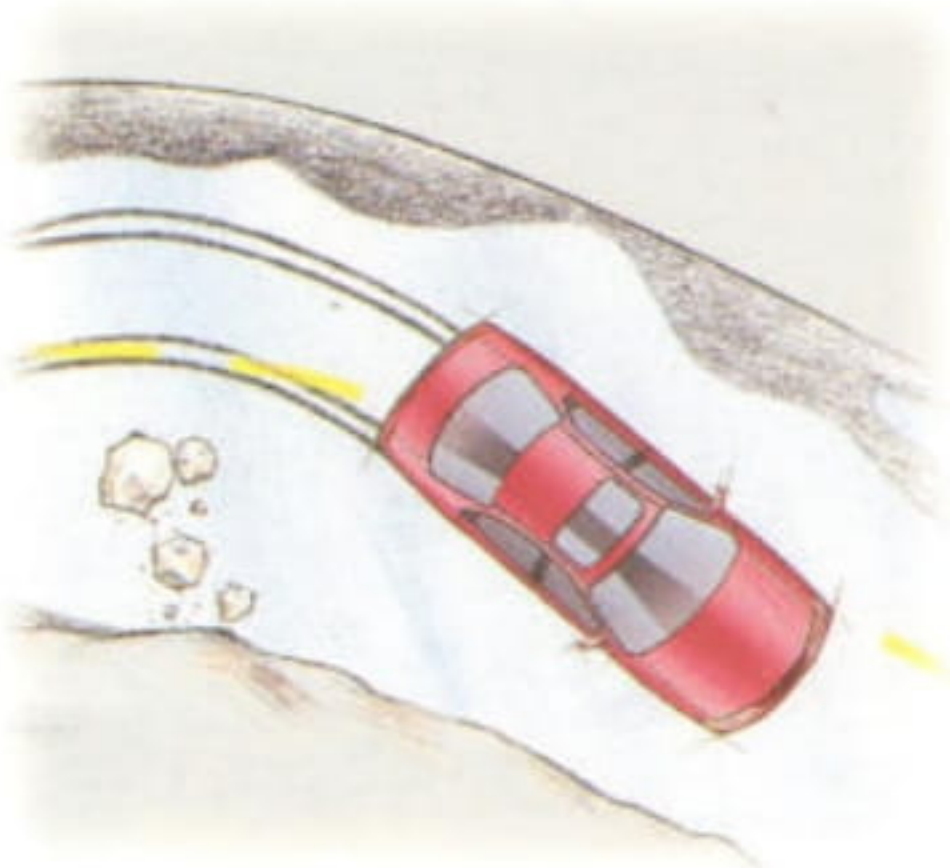
Remember, the SRS system is supplemental. Your seat belts provide primary protection and should be worn at all times.



Every 1994 Accord comes equipped with a driver's and front passenger's airbag.

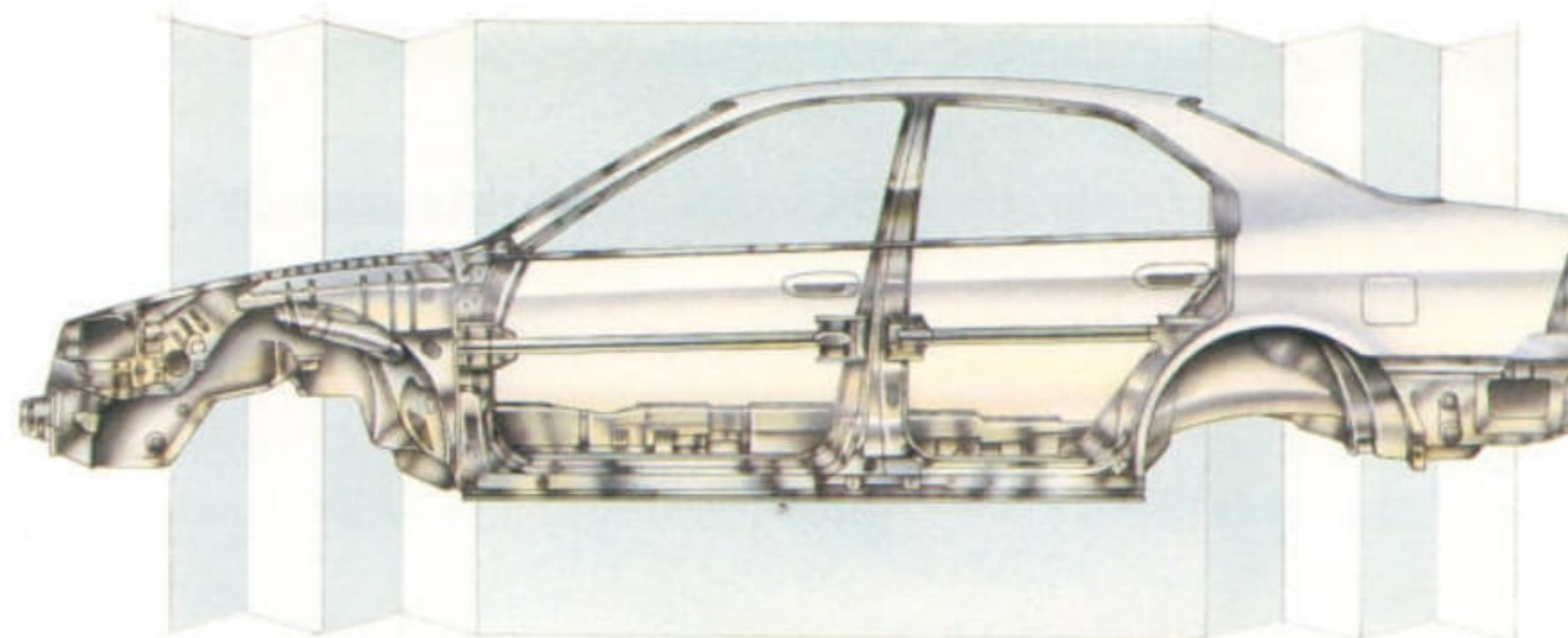


Anti-Lock Braking System (ABS) Powerful four-wheel disc brakes and a Honda-designed anti-lock braking system (ABS) are standard on Accord EX and available on the Accord LX and DX. Anti-lock brakes allow the driver to retain steering control during hard braking. This can be especially useful when braking on wet or slippery surfaces, such as rain-slicked roads, or when braking and turning at the same time.

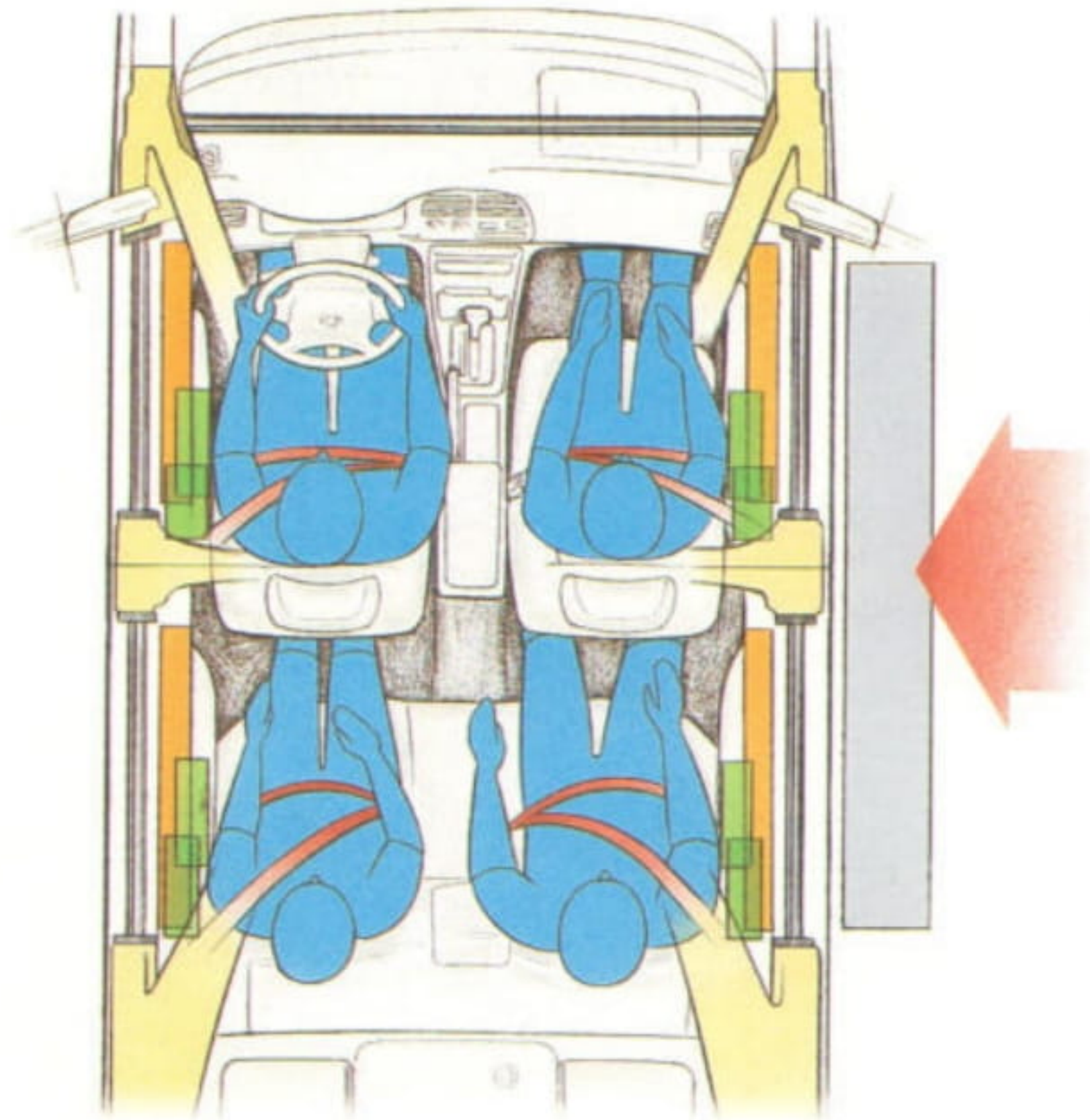


ABS uses sensors to monitor wheel speed and an electronic control unit (ECU) to monitor braking efficiency. When the ECU detects impending brake lock, it commands the brake hydraulic system to momentarily release, then reapply, the brakes. As the system cycles on and off, it pulses the brakes at up to ten times a second. This repeated cycling maintains the wheel at its maximum rate of deceleration.

Reinforced Unit Body Construction The Accord Sedan body is engineered to contribute to vehicle safety. Specially designed crush zones in the front and rear of the car progressively absorb and manage crash energy. Steel beams inside the doors help protect the driver and passengers in the event of a side impact, and the interior forms a strong safety compartment, with reinforcements in the roof supports, bulkheads, door jambs, side sills and floor.



The Accord Sedan body utilizes front and rear crush zones and a reinforced passenger safety compartment.



Extensive body reinforcement and energy-absorbing pads allow the Accord to meet 1997 federal side-impact standards.



1994 Accord Engineering Both the 130-hp Accord DX/LX engine and the 145-hp VTEC engine in the Accord EX utilize a variety of advanced Honda engine technologies to make them more powerful, compact, smooth and fuel efficient.

The engine's aluminum-alloy construction eliminates excessive weight,¹ helping the Accord to remain agile and fuel-efficient. Its compact 2.2 liter, in-line 4-cylinder design takes up less space, so more is available for passengers and cargo.

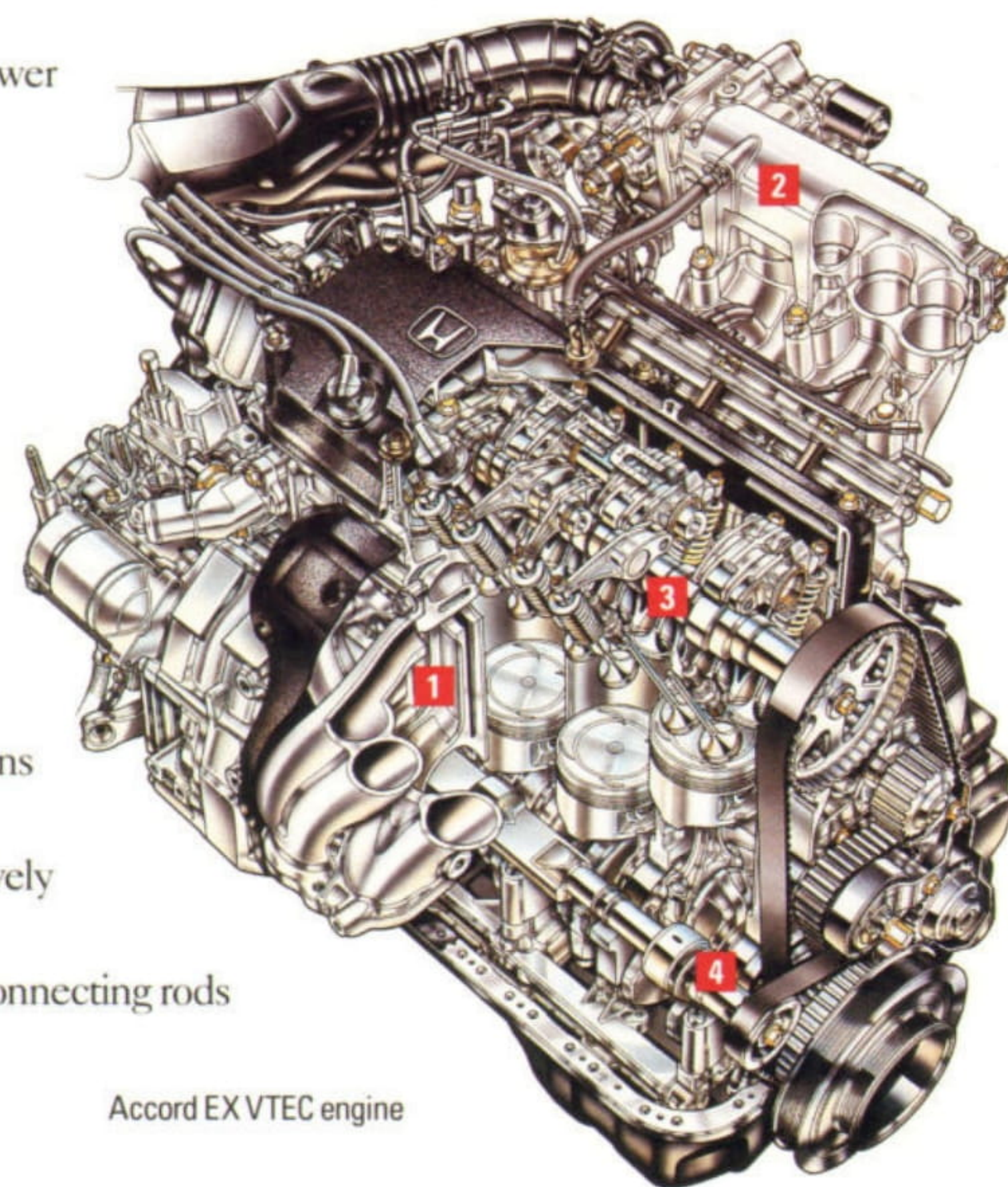
Multi-Point Programmed Fuel Injection (PGM-FI)² gives the Accord engine quick start-up, instant throttle response

Technically, the most advanced Accord to date.

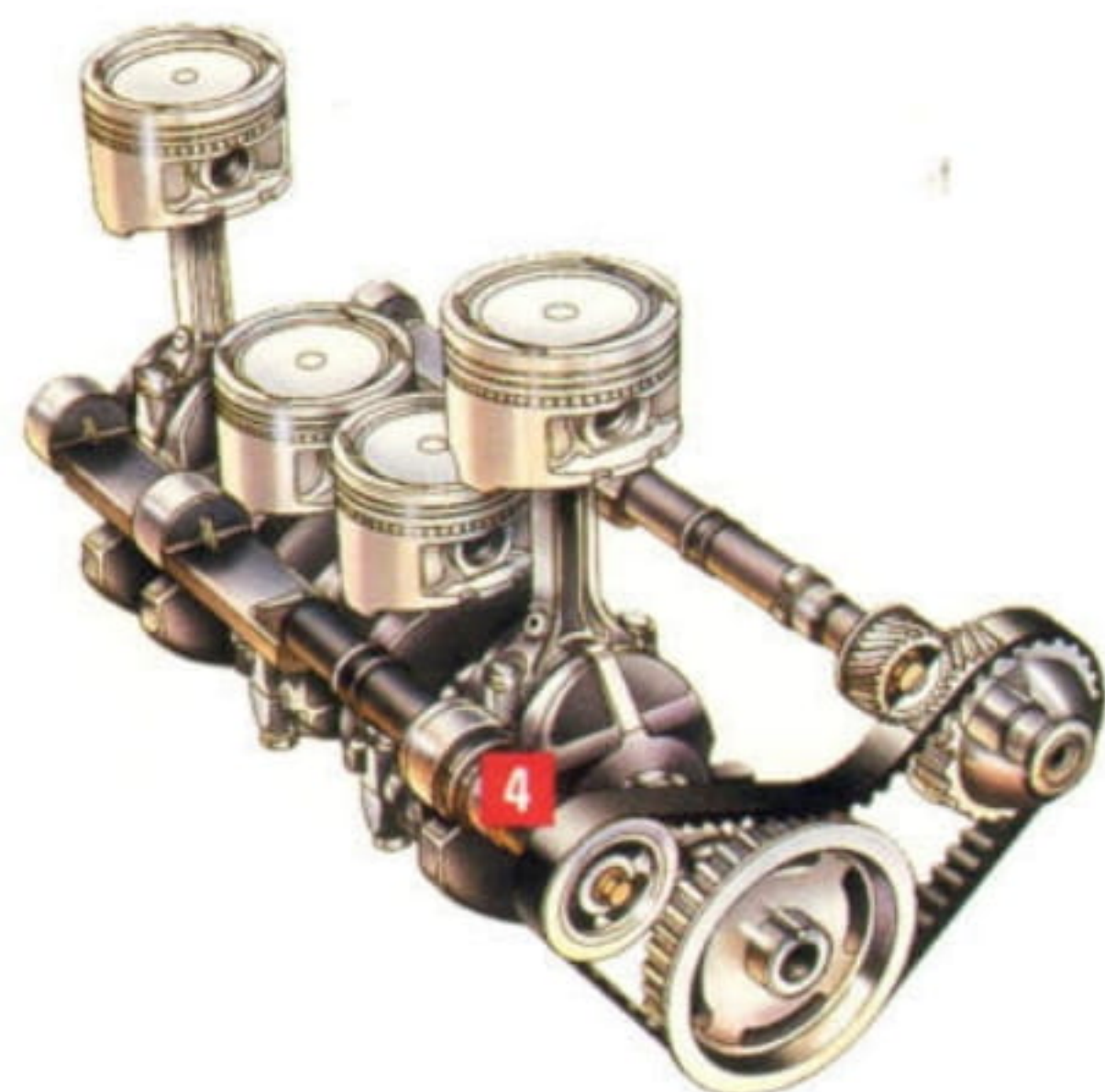
and excellent driveability, whether hot or cold. The engine's flat torque curve and wide

power band comes from its single overhead camshaft 16-valve cylinder head.³ Two intake and two exhaust valves per cylinder offer less restriction to incoming air and fuel and more thoroughly scavenge burnt exhaust gases. In effect, the engine breathes deeper, developing smooth continuous power from idle to redline.

Second-Order Balance System The Accord engine owes its exceptional smoothness to its Honda-designed second-order balance system.⁴ The system uses a set of offset-weighted shafts, located in the engine block, on either side and slightly above the crankshaft. Spinning in opposite directions and at twice the crankshaft speed, these balance shafts effectively cancel second-order vibrations created by the motion of the connecting rods and crankshaft counterweights.

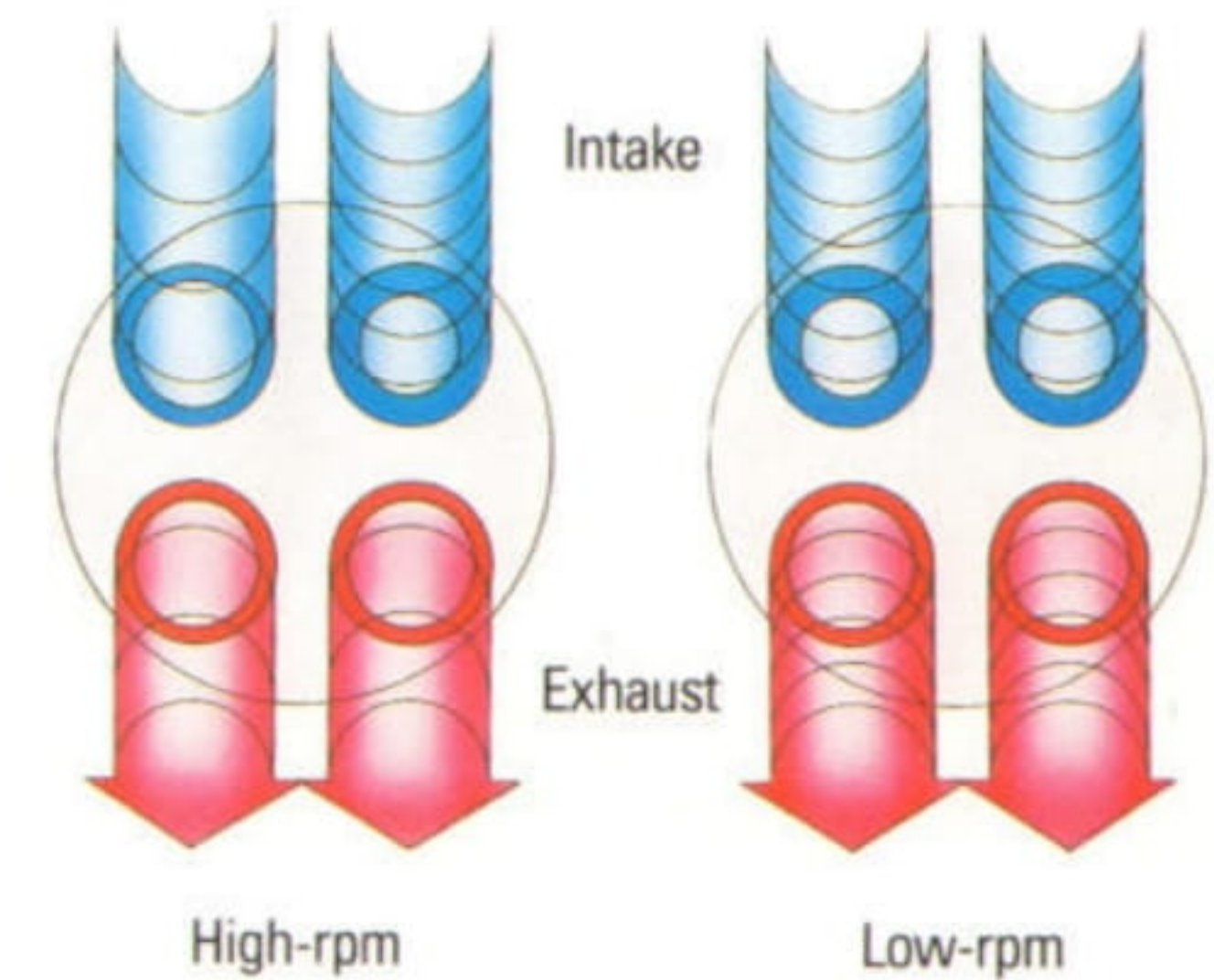


Accord EX VTEC engine





Variable Valve Timing (VTEC) The 145-hp Accord EX Sedan engine uses an advanced version of Honda's revolutionary variable valve-timing and lift system. VTEC works by actually varying how long the intake and exhaust valves remain open, which controls the amount of air-fuel mixture that is consumed by the engine. At low rpm, low valve lift and a short duration timing keep intake charge turbulence and velocity high, promoting efficient combustion. At high rpm, VTEC switches to a high-lift, long-duration valve timing that supplies sufficient air and fuel for good high-rpm torque.



VTEC varies air-fuel and exhaust gas timing in response to engine power demands.



1994 Accord Suspension Drive the Accord Sedan over varying road conditions and you begin to appreciate the capabilities of its Honda-designed double wishbone suspension system. Its upper and lower transverse links keep the wheels virtually perpendicular to the road surface for optimum adhesion when cornering. Increased track, lower roll centers, larger stabilizer bars and a new effort-sensing power steering system give the driver exceptional feedback and control. The Accord tracks accurately through curves and remains virtually unaffected by crosswinds and cambered road surfaces.

Reintroduce yourself to the road in a whole new way. Double wishbone suspension's long travel absorbs large bumps and jolts, giving it a smooth ride. Michelin MXV4 XSE tires are exclusive to the Accord EX. These all-season tires combine high mileage with exceptional wet weather performance.



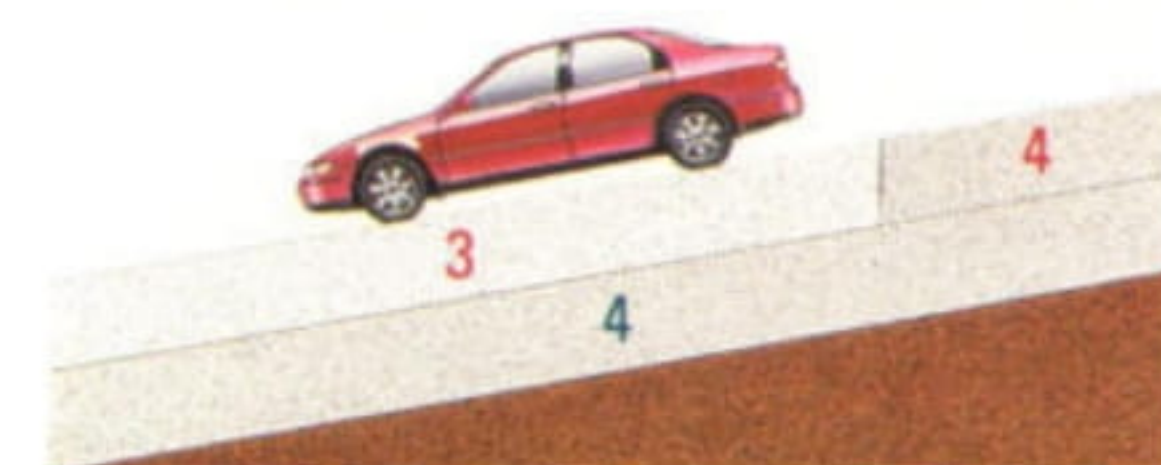
4-wheel double wishbone suspension gives the Accord exceptional handling.

Transmission The Accord's smooth-shifting, 4-speed automatic transmission features a lockup torque converter and an over-drive fourth gear for more economical, quieter highway cruising.

The transmission's Grade Logic electronic control system uses special sensors and sophisticated computer programming to actually identify different driving situations. It then reprograms the transmission shift points for optimum performance and efficiency.

For example, when driving up steep hills—a situation where many automatic transmissions continually “hunt” between fourth and third gear—Grade Logic selects a computer program that keeps the Accord in third gear. Grade Logic will also sense when the Accord is driving down a steep grade. It will then automatically downshift from 4th to 3rd gear, in order to utilize engine braking and improve brake efficiency.

Grade Logic will detect the hard braking and rapid acceleration of stop-and-go city driving or a winding road. It then downshifts the Accord transmission early for effective engine braking, then delays the upshifts for smoother acceleration.



■ Grade Logic Control System
■ Conventional Automatic Transmission



Accord LX Sedan shown in Frost White.



1994 Accord Accessories After all the big decisions have been made: Which model? What color? It's time to add a little of your own personality.

Your Honda dealer has a wide selection of Genuine Honda accessories. You can dress up your Accord with styled alloy wheels or a rear spoiler. Get a CD changer for the stereo. Or preserve that new-car look with color-coordinated floor mats, a nose mask and splash guards. No matter what you do, nothing

An innovative Honda
in-dash cellular phone offers
hands-free operation.

So, how would you like your new Accord? ing fits a Honda better than Genuine Honda accessories.

The 3-year/36,000-mile limited warranty for the Accord also covers your accessories installed at time of purchase. Your warranty guarantees you service at any one of the 1,000 or so Honda dealerships across the country. Flip through the pages of the Honda Accessories Brochure for a variety of suggestions. And have the Accord your way.



With the Honda theft-deterrent system, your new investment is protected.



Floor mats maintain the interior's appearance.



For those foggy nights, projector fog lights help brighten the way.



14" 6-spoke accessory wheel shown in silver. Also available in Cashmere.



15" 5-spoke accessory wheel shown in silver.



The trunk-mounted CD changer holds up to six discs.

SPECIFICATIONS AND DIMENSIONS

ENGINE	ACCORD DX SEDAN	ACCORD LX SEDAN	ACCORD EX SEDAN
Type: Aluminum-Alloy In-Line 4	■	■	■
Displacement (cc)	2156	2156	2156
Horsepower @ rpm (SAE net)	130 @ 5300	130 @ 5300	145 @ 5500
Torque (lb.-ft. @ rpm)	139 @ 4200	139 @ 4200	147 @ 4500
Compression Ratio	8.8	8.8	8.8
Valve Train: SOHC 16-Valve	■	■	VTEC
Fuel System: Multi-Point Fuel Injection	■	■	■
Ignition System: Electronic	■	■	■

DRIVETRAIN

Type: Front-Wheel Drive	■	■	■
Manual Transmission: 5-Speed	■	■	■
Automatic Transmission: 4-Speed (Available)	■	■	■
Final Drive Ratio (MT/AT)	4.06/4.13	4.06/4.13	4.06/4.13

BODY/SUSPENSION/CHASSIS

Body Type: Unit Body	■	■	■
Suspension: 4-Wheel Double Wishbone	■	■	■
Stabilizer Bar (mm, front/rear)	22.2/NA	22.2/NA	27.2/15.0
Steering Type: Power Rack-and-Pinion	■	■	■
Turning Diameter, Curb-to-Curb (ft.)	36.1	36.1	36.1
Front Disc/Rear Drum Brakes	■	■	NA
4-Wheel Disc Brakes with ABS	Available (1/94)	Available	■
Wheels	14" w/Full Covers	14" w/Full Covers	15" Alloy
Tires: All-Season	P185/70 R14 87S	P185/70 R14 87S Michelin XGT4	P195/60 R15 88H Michelin MXV4 XSE

EXTERIOR DIMENSIONS

Wheelbase (in.)	106.9	106.9	106.9
Length (in.)	184.0	184.0	184.0
Height (in.)	55.1	55.1	55.1
Width (in.)	70.1	70.1	70.1
Track (in., front/rear)	59.6/59.1	59.6/59.1	59.6/59.1
Curb Weight (lbs., MT/AT)	2800/2866	2877/2943	3009/3075

INTERIOR DIMENSIONS

Headroom (in., front/rear)	39.4/37.6	39.4/37.6	38.4/36.7
Legroom (in., front/rear)	42.7/34.3	42.7/34.3	42.7/34.3
Shoulder Room (in., front/rear)	55.7/54.3	55.7/54.3	55.7/54.3
Hiproom (in., front/rear)	52.6/51.4	52.6/51.4	52.6/51.4
Cargo Volume (cu. ft.)	13.0	13.0	13.0
Interior Passenger Volume (cu. ft.)	94.7	94.7	92.5

EPA MILEAGE ESTIMATES*/FUEL CAPACITY

Fuel (gal.)	17.0	17.0	17.0
City/Highway (5-Speed Manual)	25/31	25/31	25/31
City/Highway (4-Speed Automatic)	23/29	23/29	23/30

FEATURES AND STANDARD EQUIPMENT

EXTERIOR FEATURES	ACCORD DX SEDAN	ACCORD LX SEDAN	ACCORD EX SEDAN
Power Moonroof			■
Rear Fender-Mounted Power Antenna		■	■
Dual Manual Remote-Operated Mirrors	■		
Body-Colored Dual Power Mirrors		■	■
Body Side Moulding	■	■	Body-Colored
Multi-Reflector Halogen Headlights	■	■	■
Body-Colored Impact-Absorbing Bumpers	■	■	■

INTERIOR FEATURES

Driver's and Front Passenger's Airbags SRS	■	■	■
Leather-Trimmed Seats and Door Panel Inserts			Available
Leather-Wrapped Steering Wheel			Available
Driver's Seat with Power Height Adjustment			■
Driver's Seat Adjustable Lumbar Support			■
Air Conditioning		■	■
Power Windows		■	■
Power Door Locks		■	■
AM/FM High-Power Stereo Cassette		4 x 12.5-watt	4 x 20-watt w/6 Speakers
Cruise Control		■	■
Center Console Armrest with Storage Compartment	■	■	■
Front 3-Point Seat Belts	■	■	■
Adjustable Front Seat Belt Anchors	■	■	■
Rear 3-Point Seat Belts with Center Lap Belt	■	■	■
Adjustable Steering Column	■	■	■
Fold-Down Rear Seatback	w/Lock	w/Lock	w/Lock
Fold-Down Rear Seat Center Armrest		■	■
Quartz Digital Clock	■	■	■
Beverage Holder		■	■
Driver's and Passenger's Vanity Mirrors	Passenger's	■	■
Trunk-Open Warning Light	■	■	■
Remote Trunk Release with Lock	■	■	■
Rear Window Defroster with Timer	■	■	■
2-Speed/Intermittent Windshield Wipers	■	■	■
Rear Seat Heater Ducts	■	■	■
Low-Fuel Warning Light	■	■	■
Maintenance Interval Indicator	■	■	■

EXTERIOR/INTERIOR COLORS

Frost White/Taupe	■	■	■
Bordeaux Red Pearl/Gray	■	■	■
Nightshade Gray Pearl/Gray	■	■	
Sage Green Metallic/Jade	■	■	■
Cashmere Metallic/Ivory		■	■
Malachite Green Pearl/Ivory		■	
Sherwood Green Pearl/Ivory			■
Granada Black Pearl/Gray			■

*Mileage figures shown for comparison only. Actual mileage may vary. T.R.L. Polk & Company, *Leading Automobile Sales Analysis* of Repeat Ownership, 2/93. **3-Year/36,000-Mile Limited Warranty:** Ordinary maintenance items or adjustments, parts subject to normal wear and replacement, and certain items are excluded. See your Honda dealer for the terms and conditions of this limited warranty. Specifications, features, illustrations and equipment shown in this brochure are based upon the latest available information at the time of publication. Although descriptions are believed correct, accuracy cannot be guaranteed. American Honda Motor Co., Inc., reserves the right to make changes at any time, without notice or obligation, in colors, specifications, accessories, materials and models. Some vehicles are shown with optional equipment. Available=Optional. NA=Not applicable or not available. © 1993 American Honda Motor Co., Inc. Litho in U.S.A. 8/93.

Before taking your new Honda home, you'll be acquainted with one more feature. Your Honda dealer. No one is more dedicated to making your ownership experience a rewarding one. That includes the people in the Parts department and the Honda-trained Service technicians, who use only Genuine Honda parts to keep your Accord in the best possible condition. You'll also be acquainted with all your car's features, including its 3-year/36,000-mile warranty honored at the nearly 1,000 dealerships nationwide. It's an uncompromising level of attention that allows Honda to rank Number One in Owner Loyalty[†] for the past three years. Why trust your Accord to anyone else?

1994 Accord Sedan Exterior Colors
See specifications page for color applications.



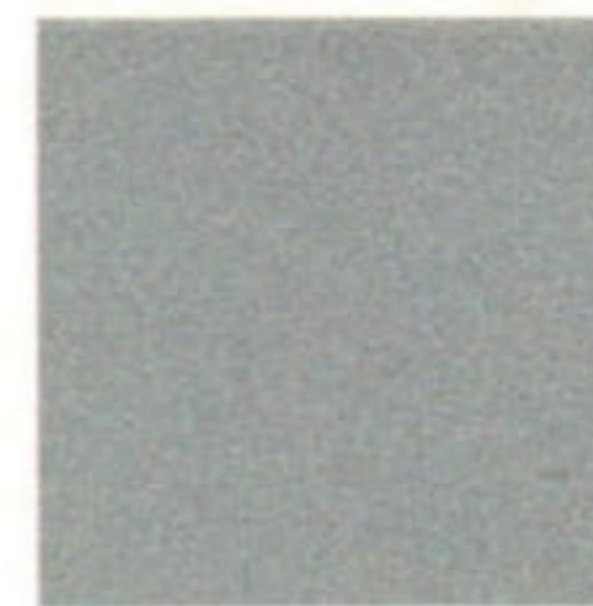
Nightshade Gray Pearl



Bordeaux Red Pearl



Frost White



Sage Green Metallic



Cashmere Metallic



Malachite Green Pearl



Granada Black Pearl



Sherwood Green Pearl

A Car Ahead

