

E L D O R A D O



2001

THE POWER OF &



THE CADILLAC LMP RACE CAR—BORN OF THE DESIRE FOR UNSURPASSED POWER AND

SPEED, IT IS A FACE FOR THE POWER OF &...THAT MARVELOUS DUALITY THAT FUSES

DESIGN AND TECHNOLOGY INTO A SINGLE ENTITY FROM LE MANS' ARNAGE CORNER TO

THE FUSION OF DESIGN & TECHNOLOGY.

BOURBON STREET. THE 2001 CADILLAC ELDORADO—BORN OF THE DESIRE TO PUT

HIGH-PERFORMANCE TECHNOLOGY IN STYLISH STREET CLOTHES. THE COMMON THREAD

BETWEEN THESE CADILLACS? THE DESIRE TO LEAVE LONGING GAZES AND KNOWING

SMILES IN THEIR WAKE. AND THAT'S WHAT DESIRE IS ALL ABOUT.



THE POWER OF &

THE CADILLAC LMP RACE CAR—BORN OF THE DESIRE FOR UNSURPASSED POWER AND

SPEED. IT IS A FACE FOR THE POWER OF &...THAT MARVELOUS DUALITY THAT FUSES

DESIGN AND TECHNOLOGY INTO A SINGLE ENTITY FROM LE MANS' ARNAGE CORNER TO

THE FUSION OF DESIGN & TECHNOLOGY.

BOURBON STREET. THE 2001 CADILLAC ELDORADO—BORN OF THE DESIRE TO PUT

HIGH-PERFORMANCE TECHNOLOGY IN STYLISH STREET CLOTHES. THE COMMON THREAD

BETWEEN THESE CADILLACS? THE DESIRE TO LEAVE LONGING GAZES AND KNOWING

SMILES IN THEIR WAKE. AND THAT'S WHAT DESIRE IS ALL ABOUT.



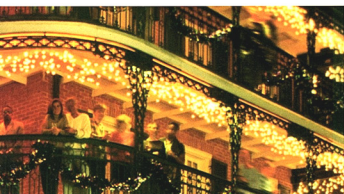
DESIGNED TO ATTRACT:

THE 300-HORSEPOWER ELDORADO TOURING COUPE.

**ETC: AN OBJECT OF DESIRE, INDIVIDUALITY,
& UNDERSTANDABLE LEVELS OF LUST.**

Setting standards for luxury and performance since 1953, Eldorado continues to evolve, and ETC takes driving to an even higher level. The perks, the extras, the etceteras on other mere mortal cars are standard fare on ETC. The 300-horsepower Northstar V8 engine gives your on-ramps the feel of Le Mans' Mulsanne Straight. StabiliTrak enhances vehicle control. The heated front seats keep you in comfort as the standard memory package recalls your favorite seating and mirror positions, environment, and sound system settings. Inside and out, the Eldorado Touring Coupe is the one you desire. Eldorado Touring Coupe. Luxury, power, etc.

ETC.. ETCETERA (ET-SET-EH-RAH) AND ALL THE REST. THE EXTRAS. THE PERKS. THE GARNISH. A COUPE
OF UNCOMPROMISING PERFORMANCE AND INDIVIDUALISTIC STYLE.



CADILLAC ELDORADO TOURING COUPE SHOWN IN CRISP PEARL

Real wood polished to perfection. Soft leathers asking to be touched. An advanced dual-zone climate control and a Bose CD-equipped audio system await your arrival.



TRADITIONAL CADILLAC CRAFTSMANSHIP
& TODAY'S TECHNOLOGIES

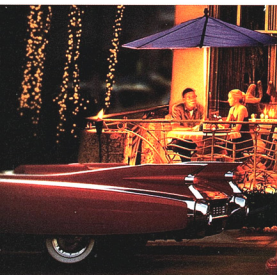


ELDORADO TOURING COUPE INTERIOR SHOWN IN BLACK

**WEAR YOUR INDIVIDUALISM ON YOUR SLEEVE.
OR AT LEAST PARK IT IN YOUR DRIVEWAY.**

The need to succeed and achieve your goals, the drive to meet all life's challenges on your own terms; these traits of yours are legend-makers. They also define Eldorado Sport Coupe. Equipped with the high-torque, 275-horsepower Northstar V8, Eldorado delivers refined power and performance. A comprehensive list of standards including supple Nuance leather seating surfaces, power front-seat recliners, a leather-wrapped steering wheel, and programmable personalization features exemplify Eldorado's attention to detail. Power and luxury wrapped in clean, classic, individualistic lines: Eldorado.

ELDRADO (EL-DOH-RAH-DOH) NOUN: A LEGENDARY LAND OF RICHES.
A SEEMINGLY UNATTAINABLE GOAL. A CADILLAC COUPE THAT IS
MOST DEFINITELY A GOAL WORTH ATTAINING.



ELDRADO SPORT COUPE SHOWN IN WHITE DIAMOND



ELDORADO

ELDORADO SPORT COUPE INTERIOR SHOWN IN NEUTRAL SHALE

STABILITRAK

A vehicle approaches
fallen rocks on a
rain-slicked road.

How Eldorado with StabiliTrak
might respond:

StabiliTrak is always engaged
and continuously gathering
information from multiple
sensors to determine if
an emergency maneuver
is underway.

When StabiliTrak detects an
evasive action, it reduces the
amount of "nose dive" during
hard braking, increases the
amount of steering-wheel
feedback, and if necessary,
"pulses" each brake to
provide an extra measure of
steering control.

StabiliTrak's computer
calculates that Eldorado's
right front wheel must receive
more braking power to help
prevent an impending skid.

Even though the driver is no
longer braking while steering
back into his lane, StabiliTrak
is still at work. StabiliTrak
determines that the left front
wheel needs braking power to
help the driver steer back into
his lane with greater stability
and control.

With the situation now in
hand, the Eldorado drives
safely away. All systems
return to monitoring mode.



WITH STABILITRAK



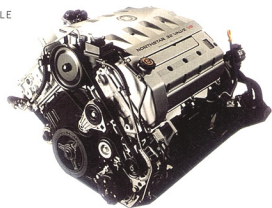
WITHOUT STABILITRAK

THE NORTHSTAR SYSTEM: THE BRAINS BEHIND THE BEAUTY.



The acclaimed Northstar System on ETC combines the powerful Northstar V8, speed-sensitive steering, anti-lock braking, and traction control. The system monitors the driver's input, factors in road conditions, and, with computer speed and accuracy, makes virtually undetectable changes that enhance performance. Adding to the Northstar System's capabilities is its integral StabiliTrak. Along with the enhancement provided by the continuously variable road-sensing suspension, these help instill a driver with the technical prowess to help ETC through emergency maneuvers and low-traction conditions.

THE NORTHSTAR V8 IS THE MUSCLE THAT DELIVERS OUTSTANDING POWER AND TORQUE IN BOTH THE 275- AND 300-HORSEPOWER VERSIONS, WHILE INNOVATIVE DESIGN ELEMENTS DELIVER QUIET OPERATION, LOW EMISSIONS, AND EXCELLENT MILEAGE (EPA ESTIMATED 17 MPG CITY, 27 MPG HIGHWAY).



**ONSTAR ONBOARD SERVICES:
EXECUTIVE ASSISTANCE AT ANYTIME.**



There's one voice with over five million service listings including hotels, restaurants, and ATMs. And it belongs to a real, live OnStar Advisor. There's a second voice with access to a customized database specified by you. It belongs to OnStar's new Virtual Advisor. Through the available Virtual Advisor, your voice commands can have your e-mail read to you while you drive, or request the latest performance of your stock portfolio. OnStar also offers Personal Calling. This available service turns OnStar into a hands-free, voice-activated cell phone.*



ONSTAR IS AS CLOSE AS THE ONSTAR BUTTON ON ELDORADO'S MIRROR. ONE TOUCH PUTS YOU IN IMMEDIATE VOICE CONTACT WITH A REAL OR "VIRTUAL" ADVISOR.

WHETHER YOU'RE IN TRAFFIC OR "IN COUNTRY," ONSTAR'S AVAILABLE VIRTUAL ADVISOR SYSTEM CAN ACCESS LOCAL WEATHER, TRAFFIC, OR NEWS AND CHANNEL IT RIGHT TO YOUR VEHICLE THROUGH VOICE-ACTIVATED PROMPTS. WHAT'S MORE, YOU CAN PERSONALIZE THE INFORMATION TO YOU BY PROGRAMMING THE VIRTUAL ADVISOR THROUGH ANY ONLINE COMPUTER. LEARN MORE AT CADILLAC.COM.

*One-year OnStar Premium Service agreement included as standard on Eldorado. Existing OnStar service agreement required for Personal Calling; additional usage charges apply. Personal Calling required for Virtual Advisor service. Interim 2001 Model Year availability in select markets for Personal Calling and Virtual Advisor. Call 1-800-ONSTAR-7 for system limitations and details.



FOR EMERGENCY SERVICE, JUST
PUSH THE RED BUTTON.



THE CLOSEST ATM FAST?
WE'LL DIRECT YOU.



DINNER OR HOTEL
RESERVATIONS—
WE MAKE THEM HAPPEN.



LOCKED OUT?
WE'LL UNLOCK VIA A
CELLULAR SIGNAL.



NEED ROADSIDE ASSISTANCE?
WE DIRECT AID TO YOU FAST.



SEND FLOWERS WITHOUT
LEAVING THE CAR.

S (Standard) A (Available) – (Not Available)

EXTERIOR FEATURES		Eldorado ESC	Eldorado ETC	Eldorado ESC	Eldorado ETC
GLASS Solar-Ray tinted		\$	\$	P235/60HR16, Goodyear Eagle LS	—
				P235/60ZR16, Goodyear LS	—
LIGHTS				WHEELS	
Daytime running lamps with Twilight Sentinel automatic operation and wiper-activated automatic-on feature, tungsten-halogen headlamps with flash-to-pass feature, front cornering lamps, illuminated entry system		\$	\$	16" wide-spoke, finished cast aluminum	\$
				16" wide-spoke, chromed	A
				16" narrow-spoke, finished cast aluminum	—
				16" narrow-spoke, chromed	A
MIRRORS				COLORS	
Electrochromic with automatic dimming on the driver's side, both sides electrically powered and heated		\$	\$	Exterior	
Programmable curb-view passenger side mirror		—	\$	Sterling, Sequoia,* Sable Black, Cashmere, Crimson Pearl [†] , White Diamond ^{††}	
				Interior, Leather	
				Dark Gray,* Neutral Shale, Black, Oatmeal	
SUNROOF				DIMENSIONS & CAPACITIES	
Glass with sunshade and one-touch express-open feature		A	A	Seating:	5 passengers
				Head room:	Front 37.8" Rear 38.3"
WINDOWS				Leg room:	Front 42.6" Rear 35.5"
Power operated with driver-side express-down		\$	\$	Hip room:	Front 57.6" Rear 57.6"
				Shoulder room:	Front 58.2" Rear 57.6"
WINDSHIELD WIPERS				Trunk:	15.3 cubic feet
Rainsense system with automatic operation		—	\$	Towing:	1,000 lbs.
				Curb weight:	ESC 3,814 lbs. ETC 3,865 lbs.
POWERTRAIN					
Engines:					
4.6 liter Northstar engine with 275 horsepower at 5,600 rpm and 300 ft.-lbs torque at 4,000 rpm		\$	—		
4.6 liter Northstar engine with 300 horsepower at 6,000 rpm and 295 ft.-lbs torque at 4,400 rpm		—	\$		
4-speed automatic transmission with overdrive and electronic shift control		\$	\$		
Front-wheel drive		\$	\$		
CHASSIS & SUSPENSION					
All-speed traction control system that integrates brake and engine management systems		\$	\$		
Brakes:					
4-wheel disc brakes with anti-lock braking system		\$	\$		
Continuously variable road-sensing suspension:					
Computer-controlled active suspension system with adjustable, computer-controlled shock absorbers		—	\$		
Electronic rear-level control system		—	\$		
StabiliTrak Ride Control System		A	\$		
Magnasteer variable-assist, speed-sensitive rack-and-pinion steering system		\$	\$		
TIRES					
All season, steel-belted, radial blackwalls					
P235/60R16, Michelin Sumatra S, R, S-R		\$	\$		

cadillac.com Visit cadillac.com for the most current information regarding Eldorado technology, features, pricing, and special events.

IMPORTANT WORDS ABOUT THE CATALOG

We have tried to make this catalog comprehensive and factual. We must reserve the right, however to make changes at any time, without notice, in the information contained in this catalog. Since some information may have been updated since the time of printing, please check with your Cadillac dealer for complete details. Any variations in colors shown are due to reproduction variations of the printing process. Some photos may include optional equipment.

Cadillac reserves the right to lengthen or shorten the model year for any product for any reason, or to start and end model years at different times.

ENGINES

Eldorados are equipped with engines produced by different operating units of General Motors, its subsidiaries, or suppliers to General Motors worldwide.

ASSEMBLY

Eldorado and its components are assembled and produced by different operating units of General Motors, its subsidiaries or suppliers to General Motors worldwide. We sometimes find it necessary to produce Eldorados with differently sourced components than originally scheduled. Since some options may be unavailable when your vehicle is assembled, we suggest that you verify that your vehicle includes the equipment you ordered, or if there are changes, that they are acceptable to you.

UPDATED SERVICE INFORMATION

Cadillac regularly sends its dealers useful service bulletins about Cadillac products. Cadillac monitors product performance in the field. We then prepare bulletins for servicing our product better. Now you can get these bulletins, too. Ask your dealer. To get ordering information, call toll-free 1-800-551-4123.

SAFETY AND SECURITY

The following are just some of the features on the 2001 Eldorado:
• OCCUPANT PROTECTION: Air bags, driver and front passenger
• Adjustable front shoulder belt guides • Automatic door locks • Child seat top tether anchors • Safety belt cinch capability for child seats
• Intentional-set belt comfort feature CRASH AVOIDANCE: Anti-lock brakes, front and rear • Automatic daytime running lamps • Automatic exterior lamp control • Automatic windshield wipers (standard on select models) • Brake/transmission shift interlock • Cornering lamps • Disc brakes, front and rear, audible wear indicator • Door warning lights or reflectors • Fog lamps • Front/side/rear window defoggers • Halogen headlamps • Inside electrochromic rearview mirror • Maintenance-free battery • Outside power rearview mirrors, heated, electrochromic

• Stability enhancement (available) • Steering wheel controls • Tinted-glass windshield • Tires with built-in tread wear indicators • Traction control • Wiper-activated exterior lamps SECURITY: Anti-lockout features • Audible theft-deterrent system • Battery rundown protection • Laser-etched VIN plate • PASS-Key theft-deterrent • Remote deck lid release • Remote hood release • Remote keyless entry • Stolen vehicle tracking/emergency communication (optional).

A NOTE ABOUT CHILD SAFETY

Always use safety belts and proper child restraints, even in vehicles with air bags. Children are safer when properly secured in a rear seat. Never place a rear-facing infant restraint in the front seat of any vehicle equipped with an active air bag. See your Owner's Manual and child safety seat instructions for more information.

WARRANTY/CORROSION PROTECTION

The General Motors four-year/50,000 mile Gold Key Bumper-to-Bumper Limited Warranty covers repairs for any new Eldorado, including labor and parts, to correct any defects in material or workmanship occurring during the warranty period. The complete vehicle will be covered for four years or 50,000 miles, whichever comes first, except adjustments and normal maintenance items. Plus free towing and a portfolio of other services. There is no deductible on any Eldorado warranty. See your Eldorado dealer for terms of these limited warranties. Eldorados are designed and built to resist corrosion. All body sheet-metal components are warranted against rust-through corrosion for six years or 100,000 miles. There is no deductible for rust-through repairs. Application of additional rust-inhibiting materials is not required under the corrosion coverage and none is recommended.

CADILLAC, CADILLAC ROADSIDE SERVICE, ELDORADO, GENERAL MOTORS, GM, the GM emblem, the GM CARD, GM PROTECTION PLAN, MAGNASTEER, NORTHSTAR, SOLAR-RAY, STABILITRAK, and TWILIGHT SENTINEL are registered trademarks, and the CADILLAC badge, THE POWER OF 8, and THE FUSION OF DESIGN & TECHNOLOGY, and RAINSENSE are trademarks of the General Motors Corporation. CADILLAC OWNER PRIVILEGES is a service mark of the General Motors Corporation. PASS-KEY and THEFTLOCK are registered trademarks of Delphi Technologies, Inc. GMC and SMARTLEASE are registered trademarks of the General Motors Acceptance Corporation. ONSTAR, the ONSTAR emblem, and the ONSTAR button are registered trademarks of the OnStar Corporation.

Litho in U.S.A. 8/00 ©2000 GM Corp. All rights reserved.



CADILLAC OWNER PRIVILEGES

BY DRIVING AN ELDORADO, YOU'RE PART OF A SELECT GROUP THAT DESERVES SPECIAL PRIVILEGES. THESE INCLUDE FREE 24-HOUR ROADSIDE SERVICE (PHONE 1-800-882-1112) AND TRIP INTERRUPTION PROTECTION. ROADSIDE SERVICE IS AVAILABLE FOR JUMP-STARTS, TOWING, LOCKOUTS, FUEL DELIVERY, OR FLAT-TIRE CHANGES. TRIP INTERRUPTION PROTECTION CAN REIMBURSE YOU FOR EXPENSES INCURRED AS A RESULT OF A WARRANTED REPAIR THAT INTERRUPTS YOUR TRAVEL. ALTERNATE TRANSPORTATION IS ALSO AVAILABLE WHENEVER YOUR VEHICLE IS IN FOR WARRANTED REPAIRS. YOU CAN ALSO RELY ON THE GM BUMPER-TO-BUMPER LIMITED WARRANTY. ALL THIS COVERAGE IS IN EFFECT FOR THE FIRST 48 MONTHS OR 50,000 MILES OF OWNERSHIP, WHICHEVER COMES FIRST. SEE YOUR DEALER FOR COMPLETE DETAILS, TERMS, AND CONDITIONS OF THESE PROGRAMS AND THE GM LIMITED WARRANTY.

ELDORADO COLOR & TRIM GUIDE



HARRIET FAREN

FREDERICK CHEVROLET - CADILLAC - OLDSMOBILE - GEO - TOYOTA
1505 Quentin Road, Lebanon, PA 17042

Residence
717/272-8118



717/274-1461
800/222-5523

EXTERIOR



12 STERLING



34 SEQUOIA*



41 SABLE
BLACK



54 CASHMERE



86 CRIMSON
PEARL**

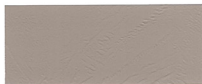


93 WHITE
DIAMOND**

INTERIOR



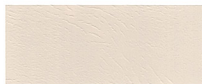
14 DARK GRAY LEATHER



15 NEUTRAL SHALE LEATHER



19 BLACK LEATHER



50 OATMEAL LEATHER

Note: Standard leather seating areas include Nuance leather inserts on the ESC and perforated Nuance leather inserts on the ETC.

* Not available at start of production.

** Available at extra cost.

