

The Kia EV4



Movement that inspires



Take your driving game to the next level.

Experience next-level driving with the new, all-electric Kia EV4. EV4 blends futuristic sedan styling with SUV-like elements, sporty EV performance with exceptional range, and refined comfort with impressive driver assistance technologies. Make your first EV your most exciting car of all - the all-new Kia EV4.



An available Dynamic Welcome Lighting system illuminates the daytime running lights and small cube projection LED headlights as you approach and unlock the vehicle using your Smart key or mobile device.*



EV4 features an NACS charge port, giving you access to thousands of additional fast-charge stations across Canada and the United States.



EV4's next-level design provides abundant cargo space featuring a wide trunk opening and up to 408L (14.4 cu. ft.) of space with the rear seats up. Fold the seats down and you can carry long and oversized items with ease.



Digital Key turns your smartphone into a secure key that unlocks the doors and starts the vehicle. A Share Key function lets you share access with others on their phones*².

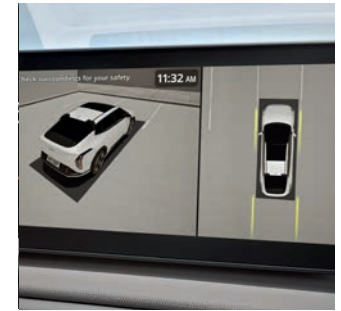
* Available feature. Visit kia.ca for full details.



A broad, sleek dashboard design and up to 30" of panoramic, driver-oriented digital displays give you uncompromising command and control of the EV4. You also enjoy a wide array of next-level amenities, including standard dual-zone automatic temperature control and available ambient mood lighting.*



Column-style electronic shifter with an integrated start/stop button for added convenience.



The available Surround View Monitor provides a 360-degree view of the area around the vehicle. And it works with the Kia Connect app to send images from around your vehicle remotely.*



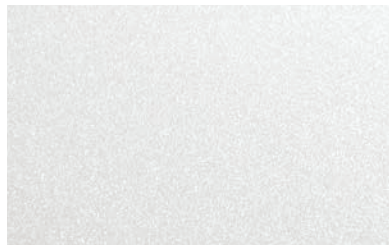
Blind view monitor displays the blind spot in the direction your turn signal is indicating.*



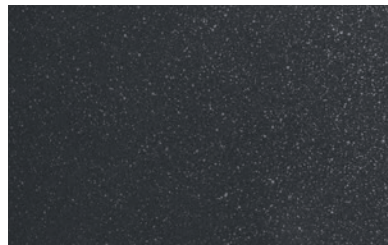
A unique Driver Relaxation Seat is available on GT-Line trims, and offers soothing zero-gravity settings for a quick refresh anytime you find yourself waiting in the car for a family member, at a rest stop or even when recharging the vehicle.*

* Available feature. Visit kia.ca for full details.

Exterior colours



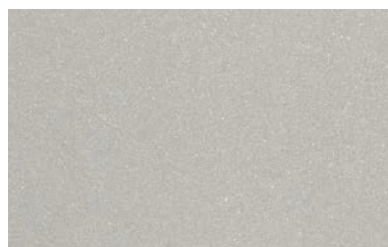
Snow White Pearl



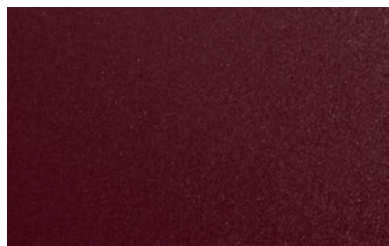
Shale Grey



Aurora Black



Ivory Silver



Magma Red



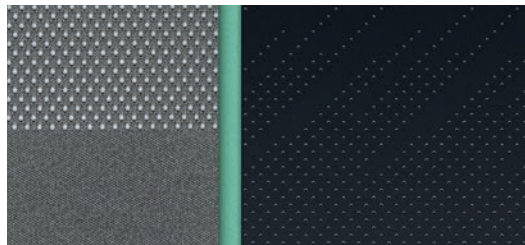
Morning Haze



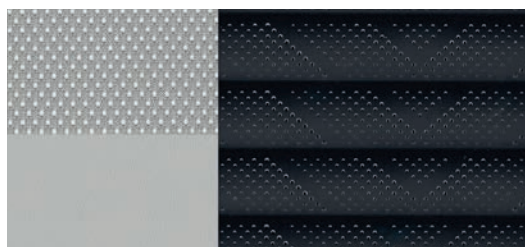
Yacht Blue

Some seating, paint and trim configurations may be limited. Visit kia.ca for full details.

Interior colours



Light / Wind / Wind Premium



GT-Line and GT-Line Limited

Wheels



Light / Wind
17" alloy wheels



Wind Premium
19" alloy wheels



GT-Line / GT-Line Limited
19" alloy wheels

Features

Light FWD

EXTERIOR

- 58.3 kWh lithium ion polymer battery
- 17" alloy wheels
- Tire mobility kit
- LED MFR and projection headlights
- LED positioning lights & daytime running lights
- LED taillights
- Rear split spoiler with LED high mounted stop lamp
- Automatic headlights
- Power and heated sideview mirrors with LED signal repeaters
- Body coloured outside mirrors
- Body coloured manual flush type outside door handles
- Acoustic laminated windshield
- Solar glass (all windows)

SAFETY

- 8 airbags
- Electronic stability control (ESC)
- 4-wheel anti-lock braking system (ABS)
- Hill-assist control (HAC)
- Downhill brake control (DBC)
- Forward collision-avoidance assist 1.5 (FCA 1.5)¹
- High beam assist (HBA)
- Highway drive assist 1 (HDA1)¹
- Blind-spot collision avoidance assist (BCA)¹
- Blind-spot collision warning (BCW)¹
- Driver attention warning (DAW)¹
- Intelligent speed limit assist (ISLA)¹
- Lane keeping assist system (LKA)¹
- Lane following assist 2 (LFA2)¹
- Rear cross-traffic collision avoidance assist (RCCA)¹
- Rear cross-traffic collision warning (RCCW)¹
- Rear occupant alert¹
- Safe exit assist¹
- Tire pressure monitoring system (TPMS)
- Rearview camera with dynamic guidelines¹
- Parking distance warning - front and rear (PDW)¹
- Manual child door locks
- Immobilizer
- Central door lock

TECHNOLOGY

- 12.3" multimedia interface with Navigation³, AM/FM/MP3, HD Radio (ccNC Lite)
- SiriusXM[®] satellite radio⁵
- 6-speaker audio
- Bluetooth[®] hands-free cell phone connectivity^{2,6}
- Wireless Apple CarPlay[®] and Android Auto[™] smartphone integration^{2,7,8}
- Front USB charging port
- 12.3" LCD/TFT Supervision instrument cluster with 5" designated HVAC display
- Kia Connect with over-the-air updates^{2,4}
- Steering wheel-mounted audio controls
- Smart key with push-button start
- Electronic parking brake with auto hold function
- Shift By Wire (SBW)
- Smart cruise control 2 (SCC 2)¹ with stop & go
- Drive Mode Select
- Battery heating system

INTERIOR

- Dual-zone automatic climate control
- Rear climate ventilation
- Rear console heating duct
- Positive temperature coefficient (PTC) heater
- Cloth seats
- Heated front seats
- Height adjustable front seats
- Front seat back pockets
- 60:40 split-folding rear seats
- Manual tilt and telescopic steering wheel
- Synthetic leather-wrapped steering wheel
- Express up/down driver window
- Obstacle-detecting driver window
- Illuminated vanity mirrors
- Rear centre cupholder

Wind FWD adds to or upgrades from Light FWD

EXTERIOR

- 81.4 kWh lithium ion polymer battery

TECHNOLOGY

- Heat pump

INTERIOR

- Power adjustable driver's seat with lumbar support

Wind Premium FWD adds to or upgrades from Wind FWD

EXTERIOR

- 19" alloy wheels
- Full width premium sunroof
- Automatic flush type outside door handles
- Rain sensing wipers

TECHNOLOGY

- Wireless phone charger²

INTERIOR

- Leather seats (synthetic)
- Heated steering wheel
- Express up/down front windows
- Obstacle-detecting front windows
- Electric Chromic auto-dimming rear-view mirror (ECM)

GT-Line FWD adds to or upgrades from Wind Premium FWD

EXTERIOR

- 19" alloy wheels (GT-Line design)
- GT-Line exterior elements
- Small cube projection LED headlights
- Dynamic welcome lighting
- Power-folding sideview mirrors
- Acoustic laminated front door glass

TECHNOLOGY

- V2L (outside and inside)
- HomeLink[®] system⁹

INTERIOR

- Driver's seat memory function
- Driver's relaxation seat
- Power adjustable front passenger's seat
- Air-cooled front seats
- Heated rear seats
- Sport steering wheel
- Deluxe door scuff plates and pedals

GT-Line Limited FWD adds to or upgrades from GT-Line FWD

SAFETY

- Forward collision-avoidance assist 2 (FCA 2)¹
- Highway drive assist 2 (HDA2)¹
- Parking collision avoidance assist — reverse¹
- Parking Distance Warning (Front/Side/Reverse)¹

TECHNOLOGY

- Surround view monitor (SVM)¹
- Blind view monitor (BVM)¹
- Remote smart parking assist (RSPA)
- Harman Kardon[®] premium audio system¹⁰
- Digital Key

INTERIOR

- Ambient mood lighting

Specifications

Mechanical

	Standard Range FWD	Long Range FWD
Engine type	Permanent Magnet AC Synchronous Motor	Permanent Magnet AC Synchronous Motor
Horsepower	201 hp	201 hp
Torque	209 lb-ft.	209 lb-ft.
Drive type	Front wheel drive (FWD)	Front wheel drive (FWD)
Voltage	369V	343V
Transmission	Single-speed reduction gear	Single-speed reduction gear

Battery performance

	Standard Range FWD	Long Range FWD
Battery	58.3 kWh lithium ion polymer	81.4 kWh lithium ion polymer
Charger	Included portable charging cable (ICCB: In-Cable Control Box); on-board 11kW	Included portable charging cable (ICCB: In-Cable Control Box); on-board 11kW
Charge ports	120 - 240V; 480V DC fast charge port	120 - 240V; 480V DC fast charge port
Charge times ¹¹	Level 1 AC 10 - 100%: 48 hours (120V) Level 2 AC 10 - 100%: 5 hours 10 minutes (11kW) Level 3 DC fast charge 10 - 80%: 29 mins (350kW); 55 mins (50kW)	Level 1 AC 10 - 100%: 66 hours 55 minutes (120V) Level 2 AC 10 - 100%: 7 hours (11kW) Level 3 DC fast charge 10 - 80%: 31 mins (350kW); 79 mins (50kW)
Driving range ¹²	391 km	Wind FWD: 552 km Wind Premium FWD: 515 km GT-Line & Limited: 488 km

Measurements

	Standard Range FWD	Long Range FWD
Cargo capacity	408 L (14.4 cu. ft.)	408 L (14.4 cu. ft.)

Please visit kia.ca for full vehicle specifications.

We've got you covered¹³

Kia engineers are passionate about producing vehicles that are exceptionally well-designed and reliable. Their dedication to quality and attention to detail give Kia the confidence to back every model with an outstanding warranty program.



**5-year/
100,000 km**

Worry-free comprehensive warranty



**5-year/
100,000 km**

Limited powertrain warranty



**8-year/
150,000 km**

Limited EV components warranty



**5-year/
unlimited km**

24-hour roadside assistance

KIA Connect

A world of support services that enhance your security, comfort and confidence — every time you get behind the wheel.

Free for the first three years. See features page or visit kia.ca for full details.



SiriusXM

With your new vehicle, enjoy access to SiriusXM® satellite radio from anywhere you go - while you're on the road, using the smartphone app, online, or even through your smart TV.

Free for the first 3 months. See features page or visit kia.ca for full details.



1. None of the features we describe are intended to replace the driver's responsibility to exercise due care while driving and are not a substitute for safe driving practices. Some features may have technological limitations. For additional information regarding the various features, including their limitations and restrictions, please refer to your vehicle's Owner's Manual. 2. Compatible smartphone required. Data rates may apply, please check with your wireless service provider. For wireless charging, certain smartphones may require a wireless charging-compatible case. 3. When equipped with the navigation system, French voice commands may be limited. 4. Kia Connect only available on select models and trims. Specific functionality may vary between models and trims. Destination Search is only available on vehicles with a navigation head unit. Certain functions are only accessible on the smartphone app and/or customer web portal and/or in-vehicle head unit. Service is free for the first three years from the day the vehicle was first registered. Monthly subscription may be applicable after the free period. Please consult your dealer for details. 5. SiriusXM satellite radio service includes 3 month trial and is available in the 10 provinces and three territories of Canada, and the 48 contiguous states of the U.S. Monthly subscription sold separately after three trial months. 6. The Bluetooth word mark and logos are registered trademarks owned by Bluetooth SIG, Inc. 7. Apple, the Apple logo, CarPlay, and iPhone are trademarks of Apple Inc., registered in the US and other countries. App Store is a service mark of Apple Inc. 8. Google, Google Play, Google Maps, and Android Auto are trademarks of Google Inc. 9. HomeLink is a registered trademark of Johnson Controls, Inc. 10. Harman Kardon is a registered trademark of Harman International Industries, Inc. All rights reserved. 11. To achieve up to 80 percent charge from 10 percent in as little as 31 minutes, a level 3 DC fast charger (350Kw) is required to be used with the vehicle's fast charging port. Charge times indicated may vary depending on various factors including, but not limited to, charging conditions and vehicle model. Fast charging impacts battery durability. 12. Based on EPA estimates. Actual range and mileage will vary depending on various factors including, but not limited to, options, driving conditions, driving habits, battery age, and your vehicle's condition. 13. The Kia 5-year/100,000-km warranty includes various warranties and roadside assistance. Some restrictions apply. For more information call us at 1-877-542-2886 or visit to kia.ca.

We make every effort to ensure that the product information in this brochure is accurate at the time of printing. Occasional changes in production, that affect the standard or optional equipment included on a specific model, may occur after printing which will not be reflected in this brochure. Kia Canada Inc. reserves the right to make these changes without notice or obligation. For this reason, please rely on kia.ca or your local Kia dealer for the very latest product information. Some vehicles shown may include optional equipment or may not be exactly as shown. Kia Canada Inc., by the publication and dissemination of this material, does not create any warranties, either expressed or implied, to any Kia products. Reproduction of the contents of this material without the expressed written approval of Kia Canada Inc. is prohibited. © Copyright 2025 Kia Canada Inc.



Movement that inspires