



ROGUE®

2026.5



¹Cargo shown for display purposes only. Cargo and load capacity limited by weight and distribution. Always secure cargo. Heavy loading of the vehicle with cargo, especially on the roof, will affect the handling and stability of the vehicle. ²See [NissanUSA.com/connect/legal](https://www.nissanusa.com/connect/legal) for more NissanConnect features/services information. ³Never program while driving. GPS mapping may not be detailed in all areas or reflect current road status. ⁴Feature availability varies by vehicle model year, model, trim level, packaging and options. **Consumer activation of NissanConnect® Services PREMIUM package ("Package") required.** Package trial period included with eligible new vehicle purchase or lease. Trial period may be subject to change or termination at any time and without notice. After trial period ends, monthly subscription fee required. Driving is serious business and requires your full attention. Only use features when safe and legal to do so. Never program while driving. GPS mapping may not be detailed in all areas or reflect current road status. Connectivity service required. App subscriptions may be required. Data rates may apply. Subject to third party service availability. Should such service providers terminate or restrict service or features, service or features may be suspended or terminated without notice or with no liability to Nissan or its partners or agents. Google, Google Play and Google Maps are trademarks of Google LLC. For more information, see [NissanUSA.com/connect/legal](https://www.nissanusa.com/connect/legal). ⁵Extra cost option. ⁶Information displayed is dependent on how vehicle is equipped. Do not use for extended periods of time. See Owner's Manual for important safety information. ⁷Information displayed in image is dependent on how vehicle is equipped. Driving is serious business and requires your full attention. If you have to use the feature while driving, exercise extreme caution at all time so full attention may be given to vehicle operation. ⁸Use Hands Free Text Messaging when parked in a safe location. If you must use while driving, monitor traffic conditions and keep both hands on the steering wheel to prevent collisions. Compatible device required. Message and data rates may apply. ⁹Driving is serious business and requires your full attention. If you have to use the connected device while driving, exercise extreme caution at all times so full attention may be given to vehicle operation. Smartphone or other external device not included. ¹⁰Driver-assist and safety features have limitations which affect how they function in certain situations. The driver must never rely exclusively on any vehicle feature to warn about, prevent, or lessen the severity of a collision. It is the driver's responsibility to always be in control, monitor the surroundings, and safely operate the vehicle. Read your vehicle's Owner's Manual for further information. ¹¹2026.5 EPA Fuel Economy Estimates. 29 City MPG / 36 Highway MPG / 32 Combined MPG for Rogue® S, SV, and Dark Armor FWD. 28 City MPG / 35 Highway MPG / 31 Combined MPG for Rogue S, SV, Dark Armor, and Platinum AWD. 27 City MPG / 32 Highway MPG / 29 Combined MPG for Rogue Rock Creek® AWD. Actual mileage may vary with driving conditions. Use for comparison only. ¹²Virtual composite 360° view. ¹³Rear Door Alert System does not detect people or cargo. Always check rear seat before exiting. See Owner's Manual for safety information. ¹⁴Driving is serious business and requires your full attention. Do not operate any devices connected to the power outlets while driving. ¹⁵Tire Pressure Monitoring System is not a substitute for regular tire pressure checks. See Owner's Manual for safety information. ¹⁶Vehicle must be on for the Easy-Fill Tire Alert to operate. ¹⁷Remote Engine Start System to be used only in accordance with laws or rules in effect in your vehicle's location. ¹⁸Inspired by ballistic nylon. ¹⁹Traffic Sign Recognition may not detect and read all traffic signs in all conditions. Driver should monitor all traffic signs and obey all traffic laws. See Owner's Manual for details. ²⁰**Nissan vehicle with "SiriusXM with 360L" capability:** SiriusXM with 360L trial period is included with the purchase or lease of a new Nissan vehicle if: (i) vehicle is equipped with SiriusXM with 360L capability and (ii) vehicle is purchased or leased from new Nissan dealer stock. Trial period begins on the purchase or lease date of the qualifying new Nissan vehicle. SiriusXM with 360L is owned and operated by SiriusXM, use of SiriusXM account and its services and features are subject to the SiriusXM Customer Agreement and Privacy Policy available at [siriusxm.com](https://www.siriusxm.com), and are not within Nissan's control. Should SiriusXM terminate, change, or restrict service or features, service or features may be suspended or terminated without notice or with no liability to Nissan or its partners or agents. Nissan and its partners or agents are also not responsible for associated costs or other third party charges that may be required for continued operation due to cellular network unavailability, restriction, or termination (including equipment replacements/upgrades, if available, or roaming charges on alternative networks). Trial period is subject to change or early termination at any time without notice. SiriusXM and related logos are trademarks of Sirius XM Radio Inc. and its respective subsidiaries. **SiriusXM and SiriusXM with 360L Trial Subscription:** Service will automatically stop at the end of your trial subscription period unless you decide to continue service. Trial is non-transferable. If you do not wish to enjoy your trial, you can cancel by calling the number below. All SiriusXM services require a subscription, each sold separately by SiriusXM after the trial period. **Service subject to the SiriusXM Customer Agreement and Privacy Policy, visit [siriusxm.com](https://www.siriusxm.com) for complete terms and how to cancel which includes online methods or calling 1-866-635-2349.** Some services and features are subject to device capabilities and location availability. Satellite service not available in AK & HI. Certain features and/or content may not be available in vehicles with SiriusXM with 360L unless an active data connection is enabled in the vehicle. Content varies by SiriusXM subscription package. All fees, content and features are subject to change. ²¹For complete limited warranty details, see your Nissan dealer and read the vehicle's Warranty Information Booklet. ²²Accessories shown on vehicle are not genuine Nissan parts/accessories. Not warranted by Nissan. Refer to product manufacturer for warranty details. Nissan limited warranty does not cover damages or failures to the vehicle caused by improper installation or alterations of any accessory or component. Contact your dealer for details. ²³Genuine Nissan Accessory Roof Rail Crossbars have a maximum weight limit of 100 lbs. ²⁴Only front kick plates illuminate. ²⁵Vehicle shown is for illustrative purposes only. Not representative of brochure's model year/model. ²⁶Dual Camera Drive Recorder to be used only in accordance with any laws or rules in effect in your vehicle's location that may apply to audio or video recordings of drivers and passengers. ²⁷Air bags are only a supplemental restraint system. Always wear your seat belt. Rear-facing child restraints should not be placed in the front-passenger's seat. All children 12 and under should ride in the rear seat properly secured in child restraints, booster seats, or seat belts according to their size. Air bags will only inflate in certain accidents. See Owner's Manual for safety information. ²⁸Roadside assistance coverage period varies by model year and model. Includes Trip Interruption benefits. For complete information concerning warranty coverage, conditions and exclusions, see your Nissan dealer and read your vehicle's Warranty Information Booklet. ²⁹Towing capacity varies by configuration. See Nissan Towing Guide and Owner's Manual for additional information. Always secure cargo. Apple CarPlay,® Apple Music,® and Siri® are registered trademarks of Apple, Inc. Bluetooth® word mark and logos are owned by Bluetooth SIG, Inc., and any use of such marks by Nissan is under license. Bose® is a registered trademark of The Bose Corporation. Google, Android, Android Auto, YouTube Music and other marks are trademarks of Google LLC. Google Assistant is not available in certain languages and countries. Wireless use of Android Auto requires a compatible Android 11.0+ phone and compatible active data plan. Check [g.co/androidauto/requirements](https://www.google.com/androidauto/requirements) for compatibility. HomeLink® is a registered trademark of Gentex Corporation. KICKER® is a registered trademark of Stillwater Designs. myQ® is a registered trademark of The Chamberlain Group, Inc. SiriusXM is a registered trademark of Sirius XM Radio Inc. Yakima® is a registered trademark of Yakima Products, Inc. This brochure is intended for general descriptive and informational purposes only. It is subject to change and does not constitute an offer, representation or warranty (express or implied) by Nissan North America, Inc. Interested parties should confirm the accuracy of any information in this brochure as it relates to a vehicle directly with Nissan North America, Inc., before relying on it to make a purchase decision. Nissan North America, Inc., reserves the right to make changes, at any time, without prior notice, in prices, colors, materials, equipment, specifications, and models and to discontinue models or equipment. Due to continuous product development and other pre- and post-production factors, actual vehicle, materials and specifications may vary from this brochure. Some vehicles shown with optional equipment. See the actual vehicle for complete accuracy. Availability and delivery times for particular models or equipment may vary. Specifications, options and accessories may differ in Hawaii, U.S. territories and other countries. For additional information on availability, options or accessories, see your Nissan dealer or contact Nissan North America, Inc. At [NissanUSA.com](https://www.nissanusa.com), you'll find virtual product demonstrations, a way to "build your own Nissan," a dealer locator, and more information about key Nissan support services. Or if you'd prefer, call **1-800-NISSAN-3** for answers to specific questions about Rogue® or any other Nissan vehicle. The Nissan names, logos, product names, feature names, and slogans are trademarks owned by or licensed to Nissan Motor Co. Ltd. and/or its North American subsidiaries. Other trademarks and trade names are those of their respective owners. Always wear your seat belt, and please drive responsibly. ©2025 Nissan North America, Inc. All rights reserved. '26.5 Rogue.

Your ultimate journey starts here

Adventure is out there waiting for you. And the 2026.5 Nissan Rogue® is the ride to help get you there, confidently and safely. Generous cargo space lets you bring the family and your gear.¹ An available 12.3" touch-screen display makes navigating your vitals even easier. And advanced connectivity utilizes features like available Google built-in, giving you access to Google Assistant and Google Maps — all without a phone.^{2,3,4} The capacity for fun never ends in the bold, capable Rogue.

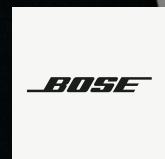


Nissan Rogue® Rock Creek® AWD shown in Boulder Gray Pearl⁵



Welcome to your mobile sanctuary

Inside, Rogue® helps provide your driving data in all the right places, bringing a sense of peace to every great escape. Get control of your surroundings with the available advanced displays that showcase all of Rogue's vital signs.^{2, 6, 7} Find comfort with the available memory driver's seat, heated front seats, and heated steering wheel. Sophistication, quality, and style surround you and your crew and make Rogue the ultimate road trip-ready ride.



Tune into the sound The available Bose Premium Audio System helps to provide a highly customized listening experience for Rogue. Based on a proprietary design and the acoustical analysis of the cabin, Bose brings the power of sound to every seat.

Nissan Rogue® Platinum AWD shown in Chestnut Quilted Semi-aniline Leather appointments with optional equipment.



Good things happen in threes

Three advanced displays deliver three times the personalization. The available high-resolution 12.3" touch-screen display,² 12.3" digital dashboard,⁷ and Head-Up Display⁶ allow you to customize your data your way. And with available Google built-in, you can talk to Google Assistant to find nearby restaurants and stores, call or text friends, and even access music to keep your crew entertained for hours.^{2, 3, 4, 8}

Don't lose sight of what matters

Check out your driving information on the available 12.3" digital dashboard, or use the available Head-Up Display to stay focused on the road ahead as it projects data like speed, turn-by-turn directions, and more directly onto the windshield.^{3, 6, 7}



Experience maximum compatibility



Equipped with Siri[®] voice control, Apple CarPlay[®] brings your contacts, favorite messaging apps, Apple Music[®] playlists, Apple Maps, and more along for the ride. And with available wireless Apple CarPlay[®] integration, you can leave the cords behind.^{2, 3, 8, 9}

Talk to Google Assistant on Android Auto and get things done with your voice. Easily send messages, get directions, control media, and more. Just say, "Hey Google" to get started.^{2, 3, 8, 9}





The vortex of good times

This is where the memories happen — the thrills, the spills, the laughter, and the triumphs. Fortunately for you, Rogue® offers plenty of space for five and enough room for gear in the back, too.¹ The second row is easy for your crew to access with rear doors that open almost 90 degrees. Available soft quilted semi-aniline leather-appointed seats deliver comfort, durability, and style, and the available Tri-Zone Automatic Temperature Control gives you and your passengers three separate comfort zones so everyone can find the right temperature. Available rear USB-C ports help keep everyone connected, and the kids can even forecast the weather by simply looking up through the available Dual Panel Panoramic Moonroof.

Nissan Rogue® Platinum AWD shown in Charcoal Quilted Semi-aniline Leather appointments with optional equipment.



Set it down, charge it up

No mess, no cords, no clutter. Get your invisible charge by simply setting down your compatible smartphone onto the available wireless charger, and the powering begins.

Left or right, out of sight

The armrest compartment has a butterfly design so that both front and rear passengers can access it. It's just big enough to store the essentials and still keep your inside clear of clutter.



Plan your great escape

Rogue® is designed to accommodate all sizes of cargo, from sunglasses and pens that fit in the under-console passageway to shopping bags and camping gear that fit in the cargo area. There's even a special spot for your milk cartons. This cargo area is loaded with possibilities, including a 60/40-split fold-down second row, an available Divide-N-Hide® cargo system, and a set of adjustable dividers to create many different storage configurations. Find the perfect fit for school days, vacation days, and almost everything in between.¹



Rock Creek® — the rugged side of Rogue®

In the Rogue Rock Creek, adventure is a philosophy to live by. Equipped with an impressive checklist of reliable features, including an HD Intelligent Around View® Monitor with Off-Road Mode,⁹ black tubular roof rack,¹ 17" dark-painted aluminum-alloy wheels with rugged, all-terrain tires, and more, Rock Creek takes you from the indoors to the outdoors, in style and confidence.



Nissan Rogue® Rock Creek® shown in Boulder Gray Pearl.⁵



Nissan Rogue® Platinum AWD shown in Deep Ocean Blue Pearl.

Life begins where the road ends

This ultimate family SUV is designed for the adventures that lie ahead. Weekends at the cabin, city escapes, days at the lake — you name it. Capability and reliability are at the core of every new Rogue. The available Intelligent All-Wheel Drive system helps give you the traction you need to go from street to dirt to snow, including five Drive Modes, available with the twist of a dial.¹⁰





Efficiency? Meet power

Up to 36 hwy mpg ¹¹	Up to 201 horsepower	Up to 225 lb-ft of torque
---	-----------------------------------	--

Rogue® is arguably the perfect getaway SUV. The Variable Compression Turbo (VC-Turbo®) engine that powers Rogue has the capability to take you far. It delivers low-compression, turbocharged power and high-compression, fuel-sipping efficiency. An abundance of power combined with long-distance efficiency bring long-lasting confidence on every getaway.¹¹



Available Nissan Safety Shield® 360

Feel confident knowing that Rogue has a set of advanced systems that can help look out for you and your precious cargo. Nissan Safety Shield 360 includes six features that monitor in front of you, behind you, and on either side and can step in to help keep you safe.¹⁰

- Automatic Emergency Braking with Pedestrian Detection¹⁰
- Rear Automatic Braking¹⁰
- Blind Spot Warning¹⁰
- Rear Cross Traffic Alert¹⁰
- Lane Departure Warning¹⁰
- High Beam Assist

Eyes just about everywhere

Available HD Enhanced Intelligent Around View® Monitor Rogue helps make fitting into tight parking spots easier by giving you a virtual composite 360° bird's-eye view, and it even lets you interact with the image, spin it around, and select from one of eight fixed 3D views for the best angle. You can select from split-screen close-ups of the front, rear, and curbside views to get the best possible fit.^{10, 12}

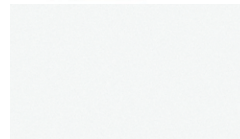


Taking the edge off traffic

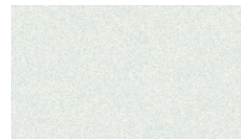
Available ProPILOT Assist helps you ease through the stop-and-go of highway traffic and helps you stay centered in your lane. Once engaged, ProPILOT Assist allows you to ease your grip on the wheel, relax your feet, and enjoy the ride!¹⁰



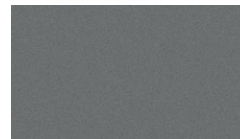
CHOOSE YOUR COLOR



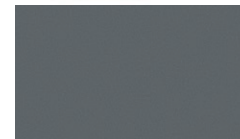
Glacier White



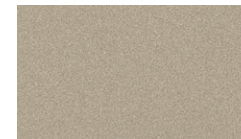
Everest White Pearl
TriCoat⁵



Gun Metallic



Boulder Gray Pearl⁵



Champagne Silver
Metallic



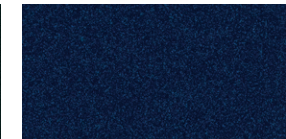
Baja Storm Metallic⁵



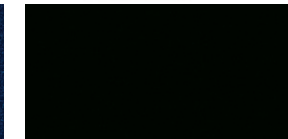
Scarlet Ember Tintcoat⁵



Obsidian Green⁵



Deep Ocean Blue Pearl



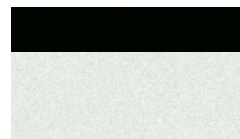
Super Black

	S	SV	DA	RC	PLT
Charcoal Cloth	<input checked="" type="checkbox"/>				
Charcoal Premium Cloth		<input checked="" type="checkbox"/>			
Charcoal Prima-Tex [®] appointments			<input checked="" type="checkbox"/>		
Light Gray Prima-Tex [®] appointments				<input checked="" type="checkbox"/>	
Charcoal Leatherette appointments				<input checked="" type="checkbox"/>	
Charcoal Quilted Semi-aniline Leather appointments					<input checked="" type="checkbox"/>
Chestnut Quilted Semi-aniline Leather appointments					<input checked="" type="checkbox"/>

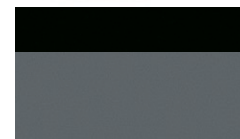
	S	SV	DA	RC	PLT
Charcoal Cloth					
Charcoal Premium Cloth		<input checked="" type="checkbox"/>			
Charcoal Prima-Tex [®] appointments			<input checked="" type="checkbox"/>		
Light Gray Prima-Tex [®] appointments				<input checked="" type="checkbox"/>	
Charcoal Leatherette appointments				<input checked="" type="checkbox"/>	
Charcoal Quilted Semi-aniline Leather appointments					<input checked="" type="checkbox"/>
Chestnut Quilted Semi-aniline Leather appointments					<input checked="" type="checkbox"/>

Standard

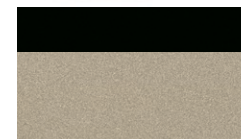
Nissan has taken care to ensure that the digital color swatches presented here are the closest possible representation of actual vehicle colors. Swatches may vary slightly due to viewing light or screen quality. Please see the actual vehicle and colors at your dealer.



Everest White TriCoat /
Super Black Two-tone⁵



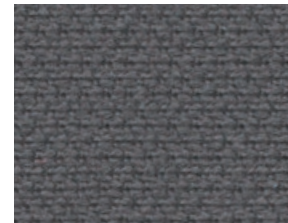
Boulder Gray Pearl /
Super Black Two-tone⁵



Champagne Silver
Metallic / Super Black
Two-tone⁵

	S	SV	DA	RC	PLT
Charcoal Cloth					
Charcoal Premium Cloth					
Charcoal Prima-Tex [®] appointments					
Light Gray Prima-Tex [®] appointments					
Charcoal Leatherette appointments					
Charcoal Quilted Semi-aniline Leather appointments					<input checked="" type="checkbox"/>
Chestnut Quilted Semi-aniline Leather appointments					<input checked="" type="checkbox"/>

CHOOSE YOUR INTERIOR



Charcoal Cloth
S



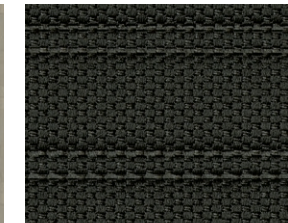
Charcoal Premium Cloth
SV



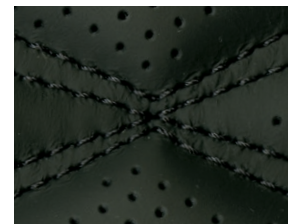
Charcoal Prima-Tex[®]
appointments
Dark Armor



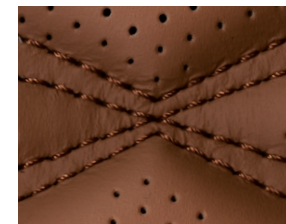
Light Gray Prima-Tex[®]
appointments
Dark Armor



Charcoal Leatherette
appointments
Rock Creek[®]



Charcoal Quilted Semi-aniline
Leather appointments
Platinum



Chestnut Quilted Semi-aniline
Leather appointments
Platinum

CHOOSE YOUR TRIM LEVEL

S

Available Intelligent All-Wheel Drive (AWD) with Drive Mode Dial,¹⁰ Cruise control, Intelligent Forward Collision Warning,¹⁰ Automatic Emergency Braking with Pedestrian Detection,¹⁰ Lane Departure Warning,¹⁰ Blind Spot Warning,¹⁰ Rear Cross Traffic Alert,¹⁰ RearView Monitor,¹⁰ High Beam Assist, Automatic Brake Hold, Hill start assist, Intelligent Driver Alertness,¹⁰ 17" Aluminum-alloy wheels, Intelligent Auto Headlights, LED headlights with LED Daytime Running Lights, LED taillights, Rear privacy glass, Air conditioning, Rear passenger vents, Rear Door Alert,¹³ Remote keyless entry with push button ignition, One 12-volt DC power outlet,¹⁴ 6-way manual driver's seat, 4-way manual front-passenger's seat, 60/40-split fold-down rear seat, Cloth seat trim, Advanced Drive-Assist[®] Display,⁷ NissanConnect[®] 8" touch-screen display,² Apple CarPlay[®] integration,² Android Auto[™] compatibility,² Bluetooth[®] Hands-free Phone System,² Two USB-C ports,⁹ SiriusXM,^{9,2} Tire Pressure Monitoring System (TPMS) with Easy-Fill Tire Alert,^{15,16} Nissan Vehicle Immobilizer System



SV INCLUDES S EQUIPMENT PLUS:

ProPILOT Assist,¹⁰ Intelligent Lane Intervention,¹⁰ Intelligent Blind Spot Intervention,^{9,10} 18" Aluminum-alloy wheels, Body-color outside mirrors, Power liftgate, Dual Zone Automatic Temperature Control, Nissan Intelligent Key[®] with Push Button Ignition, Remote Engine Start System with Intelligent Climate Control,¹⁷ Approach unlock / walk away lock, 8-way power driver's seat, with 2-way power lumbar support, Premium cloth seat trim, TailorFit[®]-wrapped steering wheel, Wi-Fi Hotspot with trial access,² Four USB-C ports,⁹ NissanConnect[®] Services powered by SiriusXM[®] with trial access,² Vehicle Security System

AVAILABLE PACKAGE:
Cold Weather Package



DARK ARMOR INCLUDES SV EQUIPMENT PLUS:

Rear Automatic Braking,¹⁰ Rear Sonar System,¹⁰ HD Intelligent Around View[®] Monitor,¹⁰ 19" Aluminum-alloy wheels, Gloss black grille, Gloss black outside mirrors, Roof rails, Gloss black badging, Dark Armor exterior badging, Dual Panel Panoramic Moonroof, Rear door sunshades, Prima-Tex[®] seats, Heated front seats, Heated steering wheel



ROCK CREEK[®] INCLUDES SV EQUIPMENT PLUS:

Rear Automatic Braking,¹⁰ Rear Sonar System,¹⁰ HD Intelligent Around View[®] Monitor with Off-Road Mode,¹⁰ Hill descent control,¹⁷ Dark-painted aluminum-alloy wheels, Unique Rock Creek[®] front fascia and grille, Gloss black outside mirrors, Black tubular roof rack, Gloss black badging, Rock Creek black exterior badging, Two 12-volt DC power outlets,¹⁴ Exclusive Rock Creek leatherette seats with unique centers and Rock Creek badging,¹⁸ Heated front seats

AVAILABLE PACKAGE:
Premium Package



PLATINUM INCLUDES SV EQUIPMENT PLUS:

Rear Automatic Braking,¹⁰ Front and Rear Sonar System,⁹ HD Enhanced Intelligent Around View[®] Monitor,¹⁰ Traffic Sign Recognition,¹⁹ 19" Unique aluminum-alloy wheels, Outside mirrors with LED turn signal indicators, Roof rails,¹ Dual Panel Panoramic Moonroof, Rear door sunshades, Connected garage door opener with myQ[®] with trial access,² Auto-dimming inside rearview mirror, Outside mirrors with reverse tilt-down feature, Interior accent lighting, Divide-N-Hide[®] cargo system, 4-way power front-passenger's seat, Memory System — driver's seat and outside mirrors, Quilted semi-aniline leather-appointed seats, Heated front seats, Heated steering wheel, 12.3" Digital dashboard with fully digital gauges,⁷ NissanConnect[®] 12.3" infotainment system,² Wireless Apple CarPlay[®] integration,² Wireless Android Auto[™] compatibility,² Google built in,^{2,4} Bose Premium Audio System including dual-driver woofer, Wireless charger, SiriusXM[®] with 360L²⁰

AVAILABLE PACKAGE:
Premium Package



CHOOSE YOUR PACKAGE

COLD WEATHER PACKAGE | SV

Heated front seats, Heated steering wheel



PREMIUM PACKAGE | ROCK CREEK

Outside mirrors with LED turn signal indicators, Motion Activated Liftgate, Auto-dimming inside rearview mirror, Outside mirrors with reverse tilt-down feature, Interior accent lighting, 4-way power front-passenger's seat, Memory System — driver's seat and outside mirrors, Heated steering wheel, Wireless charger



PREMIUM PACKAGE | PLATINUM

Motion Activated Liftgate, Tri-Zone Automatic Temperature Control, Heated rear seats, Head-Up Display⁶



NISSAN ROGUE® ACCESSORIES

Turn brand-new into all you

Every Genuine Nissan Accessory is custom-fit, custom-designed, and durability-tested. Each one is also backed by Nissan's 3-year/36,000-mile (whichever occurs first) limited warranty (if installed by the dealer at the time of new vehicle purchase) and can be financed when installed by the dealer at time of new vehicle purchase.²¹ Affiliated Yakima® accessories are not warranted by Nissan. Refer to product manufacturer for warranty details. Nissan Limited Warranty does not cover damages or failures to the vehicle caused by improper installation or alterations of any Nissan-affiliated accessory or component. Contact your dealer for details.²²



For more information and to shop online for Rogue Genuine Nissan Accessories, scan the code.



Rear/Left: **Nissan Rogue® Platinum AWD** shown in Champagne Silver Metallic / Super Black Two-tone⁵ with Exterior Ground Lighting w/ Logo, Side-Window Deflectors, Satin Chrome Rear Bumper Protector, Splash Guards (4-piece set), Roof Rail Crossbars,^{1,23} Affiliated: Yakima® SkyBox 16 — Roof Cargo Box,^{1,22} Tow Hitch Receiver,²⁹ Trailer Tow Harness (4-pin),²⁹ and Hitch Cap.

Front/Right: **Nissan Rogue® Platinum AWD** shown in Deep Ocean Blue Pearl with Exterior Ground Lighting w/ Logo, Side-Window Deflectors, Splash Guards (4-piece set), Roof Rail Crossbars,^{1,23} and Affiliated: Yakima® LoadWarrior — Cargo Basket.^{1,22}

CHOOSE YOUR ACCESSORIES

- A. Carpeted Floor Mats and All-Season Floor Mats — High Wall Liners (sold separately)**
Protect the floor and help keep things clean.
- B. Cargo Net**
Help control cargo chaos by keeping items secure and in place.
- C. Nissan Tailgate Audio by KICKER®**
Enjoy your music in more places with this wireless, mobile, and waterproof sound system.
- D. Illuminated Kick Plates and Interior Accent Lighting (sold separately)²⁴**
For a grand entry every time.
- E. Soft Sided Cargo Cooler and Satin Chrome Rear Bumper Protector (sold separately)**
Help keep your food and drinks cool and protect your bumper on your next adventure.
- F. Tablet Holder²⁵**
Keep your tablet within easy reach.
- G. Dual Camera Drive Recorder^{25, 26}**
Keep a video record of your drive for extra confidence.
- H. Trash Bin²⁵**
Keep things clean with this convenient spot for trash.

Additional Accessories:

- Rear USB-PD Charging Ports
- Security Impact Sensor
- Wireless Smartphone Charger
- Remote Engine Start¹⁷
- Clear Hood Protector
- Frameless Auto-Dimming Rearview Mirror w/ HomeLink®
- Retractable Cargo Cover
- Cargo Blocks/Stabilizers
- Removable Tote Cargo Organizer
- Carpeted Cargo Area Protector
- And More



SPECIFICATIONS

Engine	S	SV	DA	RC	PLT
1.5-liter DOHC 12-valve Variable Compression Turbo (VC-Turbo®) 3-cylinder engine Horsepower — 201 hp @ 5,600 rpm Torque — 225 lb-ft @ 2,800–4,000 rpm	■	■	■	■	■

Drivetrain	S	SV	DA	RC	PLT
Front-Wheel Drive (FWD)	■	■	■	■	■
Intelligent All-Wheel Drive (AWD) with Drive Mode Dial ¹⁰	□	□	□	■	■
Xtronic CVT® (Continuously Variable Transmission) with Manual Mode	■	■	■	■	■
Electronic shifter	■	■	■	■	■
Paddle shifters	■	■	■	■	■
Eco and Sport Modes	■	■	■	■	■
Snow and Off-Road Modes	□	□	□	■	■

Brakes	S	SV	DA	RC	PLT
Front and rear vented disc brakes	■	■	■	■	■
4-wheel Anti-lock Braking System (ABS)	■	■	■	■	■
Electronic Brake force Distribution (EBD)	■	■	■	■	■
Brake Assist ¹⁰	■	■	■	■	■
Electronic parking brake	■	■	■	■	■

Suspension/Steering	S	SV	DA	RC	PLT
Independent strut front suspension	■	■	■	■	■
Independent multi-link rear suspension	■	■	■	■	■
Front and rear stabilizer bars	■	■	■	■	■
Vehicle-speed-sensitive electric power steering	■	■	■	■	■

Driver Assistance Technologies	S	SV	DA	RC	PLT
Cruise control	■	■	■	■	■
ProPILOT Assist ¹⁰	■	■	■	■	■
Intelligent Forward Collision Warning ¹⁰	■	■	■	■	■
Automatic Emergency Braking with Pedestrian Detection ¹⁰	■	■	■	■	■
Lane Departure Warning ¹⁰	■	■	■	■	■
Intelligent Lane Intervention ¹⁰	■	■	■	■	■
Blind Spot Warning ¹⁰	■	■	■	■	■
Intelligent Blind Spot Intervention ¹⁰	■	■	■	■	■
Rear Cross Traffic Alert ¹⁰	■	■	■	■	■
Rear Automatic Braking ¹⁰	■	■	■	■	■
Rear Sonar System ¹⁰	■	■	■	■	■
Front and Rear Sonar System ¹⁰	■	■	■	■	■
RearView Monitor ¹⁰	■	■	■	■	■
HD Intelligent Around View® Monitor ¹⁰	■	■	■	■	■
HD Intelligent Around View® Monitor with Off-Road Mode ¹⁰	■	■	■	■	■
HD Enhanced Intelligent Around View® Monitor ¹⁰	■	■	■	■	■
High Beam Assist	■	■	■	■	■
Vehicle Dynamic Control (VDC) ¹⁰ with Traction Control System (TCS)	■	■	■	■	■
Intelligent Trace Control ¹⁰	■	■	■	■	■
Active Ride Control	■	■	■	■	■
Automatic Brake Hold	■	■	■	■	■
Hill start assist	■	■	■	■	■

Driver Assistance Technologies (continued)	S	SV	DA	RC	PLT
Hill descent control	■	■	■	■	■
Intelligent Driver Alertness ¹⁰	■	■	■	■	■
Traffic Sign Recognition ¹⁹	■	■	■	■	■

Wheels/Tires	S	SV	DA	RC	PLT
17" Aluminum-alloy wheels	■	■	■	■	■
17" Dark-painted aluminum-alloy wheels	■	■	■	■	■
18" Aluminum-alloy wheels	■	■	■	■	■
19" Aluminum-alloy wheels	■	■	■	■	■
19" Unique aluminum-alloy wheels	■	■	■	■	■
P235/65R17 All-season tires	■	■	■	■	■
P235/65R17 All-terrain tires	■	■	■	■	■
P235/60R18 All-season tires	■	■	■	■	■
P235/55R19 All-season tires	■	■	■	■	■

Exterior Features	S	SV	DA	RC	PLT
Intelligent Auto Headlights	■	■	■	■	■
LED headlights with LED Daytime Running Lights	■	■	■	■	■
LED taillights	■	■	■	■	■
Gloss black grille	■	■	■	■	■
Unique Rock Creek® front fascia and grille	■	■	■	■	■
Body-color outside mirrors	■	■	■	■	■
Gloss black outside mirrors	■	■	■	■	■
Outside mirrors with LED turn signal indicators	■	■	■	■	■
Roof rails ¹	■	■	■	■	■
Black tubular roof rack ¹	■	■	■	■	■
Rear spoiler	■	■	■	■	■
Gloss black badging	■	■	■	■	■
Dark Armor exterior badging	■	■	■	■	■
Rock Creek black exterior badging	■	■	■	■	■
Power liftgate	■	■	■	■	■
Motion Activated Liftgate	■	■	■	■	■
Dual Panel Panoramic Moonroof	■	■	■	■	■

Comfort/Convenience	S	SV	DA	RC	PLT
Air conditioning	■	■	■	■	■
Dual Zone Automatic Temperature Control	■	■	■	■	■
Tri-Zone Automatic Temperature Control	■	■	■	■	■
In-cabin microfilter	■	■	■	■	■
Rear passenger vents	■	■	■	■	■
Rear Door Alert ¹³	■	■	■	■	■
Rear door sunshades	■	■	■	■	■
Power windows with driver's one-touch auto-up/down feature	■	■	■	■	■
Power door locks with auto-locking feature	■	■	■	■	■
Remote keyless entry with push button ignition	■	■	■	■	■
Nissan Intelligent Key® with Push Button Ignition	■	■	■	■	■
Remote Engine Start System with Intelligent Climate Control ¹⁷	■	■	■	■	■
Approach unlock / walk away lock	■	■	■	■	■
Connected garage door opener with myQ® with trial access to 1-year Premium package ²	■	■	■	■	■

Comfort/Convenience (continued)	S	SV	DA	RC	PLT
Tilt and telescoping steering column	■	■	■	■	■
Auto-dimming inside rearview mirror	■	■	■	■	■
Outside mirrors with reverse tilt-down feature	■	■	■	■	■
Interior accent lighting	■	■	■	■	■
Variable intermittent flat-blade windshield wipers	■	■	■	■	■
Intermittent rear window wiper	■	■	■	■	■
One 12-volt DC power outlet ¹⁴	■	■	■	■	■
Two 12-volt DC power outlets ¹⁴	■	■	■	■	■
Sun visors with illuminated vanity mirrors	■	■	■	■	■
Front-passenger seatback pocket	■	■	■	■	■
Four cargo tie-down hooks ¹	■	■	■	■	■
Divide-N-Hide® cargo system	■	■	■	■	■

Seating/Appointments	S	SV	DA	RC	PLT
6-way manual driver's seat	■	■	■	■	■
8-way power driver's seat, with 2-way power lumbar support	■	■	■	■	■
4-way manual front-passenger's seat	■	■	■	■	■
4-way power front-passenger's seat	■	■	■	■	■
Memory System — driver's seat and outside mirrors	■	■	■	■	■
60/40-split fold-down rear seat	■	■	■	■	■
Cloth seat trim	■	■	■	■	■
Premium cloth seat trim	■	■	■	■	■
Prima-Tex® seats	■	■	■	■	■
Exclusive Rock Creek leatherette seats with unique centers and Rock Creek badging ¹⁸	■	■	■	■	■
Quilted semi-aniline leather-appointed seats	■	■	■	■	■
TailorFit®-wrapped steering wheel	■	■	■	■	■
Heated front seats	■	■	■	■	■
Heated rear seats	■	■	■	■	■
Heated steering wheel	■	■	■	■	■

Infotainment	S	SV	DA	RC	PLT
Advanced Drive-Assist® Display ⁷	■	■	■	■	■
12.3" Digital dashboard with fully digital gauges ⁷	■	■	■	■	■
NissanConnect® 8" touch-screen display ²	■	■	■	■	■
NissanConnect® 12.3" infotainment system ²	■	■	■	■	■
Head-Up Display ⁶	■	■	■	■	■
Voice Recognition	■	■	■	■	■
Enhanced Voice Recognition	■	■	■	■	■
Apple CarPlay® integration ²	■	■	■	■	■
Wireless Apple CarPlay® integration ²	■	■	■	■	■
Android Auto™ compatibility ²	■	■	■	■	■
Wireless Android Auto™ compatibility ²	■	■	■	■	■
Google built-in ^{2, 4}	■	■	■	■	■
Wi-Fi Hotspot with trial access to 1-year Premium package ²	■	■	■	■	■
Bluetooth® Hands-free Phone System ²	■	■	■	■	■
AM/FM audio system with four speakers	■	■	■	■	■
AM/FM audio system with six speakers	■	■	■	■	■
Bose Premium Audio System including dual-driver woofer	■	■	■	■	■
Two USB-C ports ⁹	■	■	■	■	■

Infotainment (continued)	S	SV	DA	RC	PLT
Four USB-C ports ⁹	■	■	■	■	■
Wireless charger	■	■	■	■	■
SiriusXM® with 3-month subscription included ²	■	■	■	■	■
SiriusXM® with 360L with 3-month subscription included ²⁰	■	■	■	■	■
NissanConnect® Services powered by SiriusXM® with trial access to 5-year Select and 1-year Premium packages ²	■	■	■	■	■

Safety	S	SV	DA	RC	PLT
Nissan Advanced Air Bag System with dual-stage supplemental front air bags with seat-belt and occupant-classification sensors ²⁷	■	■	■	■	■
LATCH System (Lower Anchors and Tethers for CHILDren)	■	■	■	■	■
Tire Pressure Monitoring System (TPMS) with Easy-Fill Tire Alert ^{5, 16}	■	■	■	■	■

CAPACITIES

Capacities	S	SV	DA	RC	PLT
Seating capacity	5	5	5	5	5
Interior passenger volume without moonroof (cu. ft.)	105.4	105.4	—	105.4	—
Interior passenger volume with moonroof (cu. ft.)	—	—	100.4	—	100.4
Maximum cargo capacity with rear seats upright (cu. ft.) without moonroof	36.5	36.5	—	36.5	—
Maximum cargo capacity with rear seats upright (cu. ft.) with moonroof ¹	—	—	36.3	—	36.3
Fuel tank (gals.)	14.5	14.5	14.5	14.5	14.5

Curb Weights — Lbs.	S	SV	DA	RC	PLT
Base total (FWD/AWD)	3,456/ 3,586	3,492/ 3,617	3,588/ 3,761	—/ 3,700	—/ 3,761

2026.5 EPA Fuel Economy Estimates ¹¹	S	SV	DA	RC	PLT
City MPG (FWD/AWD)	29/28	29/28	29/28	27	28
Highway MPG (FWD/AWD)	36/35	36/35	36/35	32	35
Combined MPG (FWD/AWD)	32/31	32/31	32/31	29	31

NISSAN ROADSIDE ASSISTANCE

Includes added peace of mind. For 36 months or 36,000 miles, whichever comes first, your new Nissan is covered for the following:²⁸

- Flat-tire changes
- Trip Interruption benefits
- Jump starts
- Vehicle lockouts
- Emergency fuel delivery

visit [NissanUSA.com/rogue](https://www.nissanusa.com/rogue)

PRINTED IN USA

■ Standard □ Optional

CW Part of Cold Weather Package

P1 Part of Rock Creek Premium Package

P2 Part of Platinum Premium Package